

# Casein Kinase II $\beta$ (phospho Ser209) Polyclonal Antibody

Catalog # AP67664

## Product Information

---

<b>Application</b>	WB, IHC-P, IF, ICC, E
<b>Primary Accession</b>	<a href="#">P67870</a>
<b>Reactivity</b>	Human, Mouse, Rat
<b>Host</b>	Rabbit
<b>Clonality</b>	Polyclonal
<b>Calculated MW</b>	24942

## Additional Information

---

<b>Gene ID</b>	1460
<b>Other Names</b>	CSNK2B; CK2N; G5A; Casein kinase II subunit beta; CK II beta; Phosvitin; Protein G5a
<b>Dilution</b>	WB~~Western Blot: 1/500 - 1/2000. Immunohistochemistry: 1/100 - 1/300. ELISA: 1/40000. Not yet tested in other applications. IHC-P~~N/A IF~~1:50~200 ICC~~N/A E~~N/A
<b>Format</b>	Liquid in PBS containing 50% glycerol, 0.5% BSA and 0.09% (W/V) sodium azide.
<b>Storage Conditions</b>	-20°C

## Protein Information

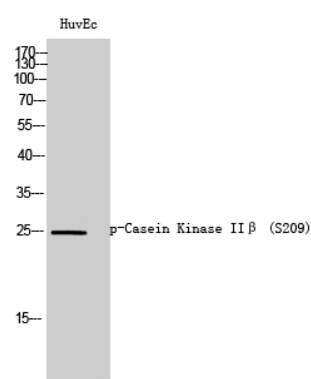
---

<b>Name</b>	CSNK2B ( <a href="#">HGNC:2460</a> )
<b>Synonyms</b>	CK2N, G5A
<b>Function</b>	Regulatory subunit of casein kinase II/CK2. As part of the kinase complex regulates the basal catalytic activity of the alpha subunit a constitutively active serine/threonine-protein kinase that phosphorylates a large number of substrates containing acidic residues C-terminal to the phosphorylated serine or threonine (PubMed: <a href="#">11239457</a> , PubMed: <a href="#">16818610</a> ). Participates in Wnt signaling (By similarity).
<b>Cellular Location</b>	Nucleus.

## Background

---

Participates in Wnt signaling (By similarity). Plays a complex role in regulating the basal catalytic activity of the alpha subunit.



Western Blot analysis of HuvEc cells using  
Phospho-Casein Kinase IIβ (S209) Polyclonal Antibody

Please note: All products are 'FOR RESEARCH USE ONLY. NOT FOR USE IN DIAGNOSTIC OR THERAPEUTIC PROCEDURES'.