

# Vimentin (phospho Ser83) Polyclonal Antibody

Catalog # AP67698

## Product Information

---

Application	WB, IHC-P
Primary Accession	<a href="#">P08670</a>
Reactivity	Human, Mouse, Rat
Host	Rabbit
Clonality	Polyclonal
Calculated MW	53652

## Additional Information

---

Gene ID	7431
Other Names	VIM; Vimentin
Dilution	WB~~Western Blot: 1/500 - 1/2000. Immunohistochemistry: 1/100 - 1/300. ELISA: 1/10000. Not yet tested in other applications. IHC-P~~Western Blot: 1/500 - 1/2000. Immunohistochemistry: 1/100 - 1/300. ELISA: 1/10000. Not yet tested in other applications.
Format	Liquid in PBS containing 50% glycerol, 0.5% BSA and 0.09% (W/V) sodium azide.
Storage Conditions	-20°C

## Protein Information

---

Name	VIM ( <a href="#">HGNC:12692</a> )
Function	Vimentins are class-III intermediate filaments found in various non-epithelial cells, especially mesenchymal cells. Vimentin is attached to the nucleus, endoplasmic reticulum, and mitochondria, either laterally or terminally. Plays a role in cell directional movement, orientation, cell sheet organization and Golgi complex polarization at the cell migration front (By similarity). Protects SCRIB from proteasomal degradation and facilitates its localization to intermediate filaments in a cell contact-mediated manner (By similarity).
Cellular Location	Cytoplasm. Cytoplasm, cytoskeleton. Nucleus matrix {ECO:0000250 UniProtKB:P31000}. Cell membrane {ECO:0000250 UniProtKB:P20152}
Tissue Location	Highly expressed in fibroblasts, some expression in T- and B-lymphocytes, and little or no expression in Burkitt's lymphoma cell lines. Expressed in many hormone-independent mammary carcinoma cell lines.

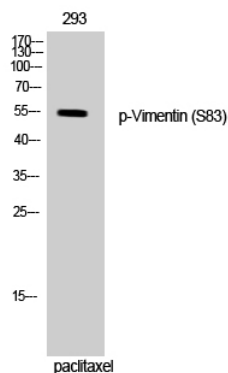
## Background

---

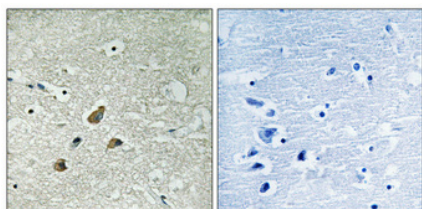
Vimentins are class-III intermediate filaments found in various non-epithelial cells, especially mesenchymal cells. Vimentin is attached to the nucleus, endoplasmic reticulum, and mitochondria, either laterally or terminally.

## Images

---



Western Blot analysis of 293 cells using  
Phospho-Vimentin (S83) Polyclonal Antibody



Immunohistochemical analysis of paraffin-embedded  
Human brain. Antibody was diluted at  
1:100(4°,overnight). High-pressure and temperature  
Tris-EDTA,pH8.0 was used for antigen retrieval. Negative  
ctrl (right) obtained from antibody was pre-absorbed by  
immunogen peptide.

Please note: All products are 'FOR RESEARCH USE ONLY. NOT FOR USE IN DIAGNOSTIC OR THERAPEUTIC PROCEDURES'.