

CtBP1 (phospho Ser422) Polyclonal Antibody

Catalog # AP67747

Product Information

Application	WB, IHC-P
Primary Accession	Q13363
Reactivity	Human, Mouse, Rat
Host	Rabbit
Clonality	Polyclonal
Calculated MW	47535

Additional Information

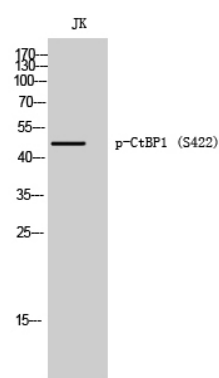
Gene ID	1487
Other Names	CTBP1; CTBP; C-terminal-binding protein 1; CtBP1
Dilution	WB~~Western Blot: 1/500 - 1/2000. Immunohistochemistry: 1/100 - 1/300. ELISA: 1/10000. Not yet tested in other applications. IHC-P~~N/A
Format	Liquid in PBS containing 50% glycerol, 0.5% BSA and 0.09% (W/V) sodium azide.
Storage Conditions	-20°C

Protein Information

Name	CTBP1
Synonyms	CTBP
Function	Corepressor targeting diverse transcription regulators such as GLIS2 or BCL6. Has dehydrogenase activity. Involved in controlling the equilibrium between tubular and stacked structures in the Golgi complex. Functions in brown adipose tissue (BAT) differentiation.
Cellular Location	Cytoplasm. Nucleus
Tissue Location	Expressed in germinal center B-cells.

Background

Corepressor targeting diverse transcription regulators such as GLIS2 or BCL6. Has dehydrogenase activity. Involved in controlling the equilibrium between tubular and stacked structures in the Golgi complex. Functions in brown adipose tissue (BAT) differentiation.



Western Blot analysis of JK cells using Phospho-CtBP1 (S422) Polyclonal Antibody

Please note: All products are 'FOR RESEARCH USE ONLY. NOT FOR USE IN DIAGNOSTIC OR THERAPEUTIC PROCEDURES'.