

p16 (phospho Ser326) Polyclonal Antibody

Catalog # AP67759

Product Information

Application	WB, IHC-P
Primary Accession	P42771
Reactivity	Human
Host	Rabbit
Clonality	Polyclonal
Calculated MW	16533

Additional Information

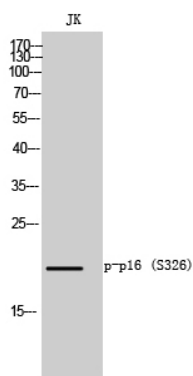
Gene ID	1029
Other Names	CDKN2A; CDKN2; MTS1; Cyclin-dependent kinase inhibitor 2A; isoforms 1/2/3; Cyclin-dependent kinase 4 inhibitor A; CDK4I; Multiple tumor suppressor 1; MTS-1; p16-INK4a; p16-INK4; p16INK4A
Dilution	WB~~Western Blot: 1/500 - 1/2000. Immunohistochemistry: 1/100 - 1/300. ELISA: 1/5000. Not yet tested in other applications. IHC-P~~N/A
Format	Liquid in PBS containing 50% glycerol, 0.5% BSA and 0.09% (W/V) sodium azide.
Storage Conditions	-20°C

Protein Information

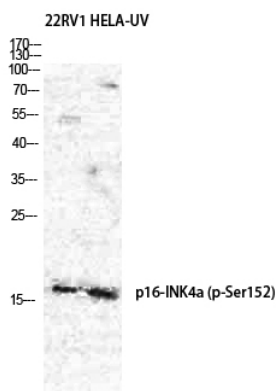
Name	CDKN2A (HGNC:1787)
Synonyms	CDKN2, MTS1
Function	Acts as a negative regulator of the proliferation of normal cells by interacting strongly with CDK4 and CDK6. This inhibits their ability to interact with cyclins D and to phosphorylate the retinoblastoma protein.
Cellular Location	Cytoplasm. Nucleus
Tissue Location	Widely expressed but not detected in brain or skeletal muscle. Isoform 3 is pancreas-specific

Background

Acts as a negative regulator of the proliferation of normal cells by interacting strongly with CDK4 and CDK6. This inhibits their ability to interact with cyclins D and to phosphorylate the retinoblastoma protein.



Western Blot analysis of JK cells using Phospho-p16 (S326) Polyclonal Antibody diluted at 1 : 500



Western Blot analysis of 22RV1 HELA cells using Phospho-p16 (S326) Polyclonal Antibody diluted at 1 : 500

Please note: All products are 'FOR RESEARCH USE ONLY. NOT FOR USE IN DIAGNOSTIC OR THERAPEUTIC PROCEDURES'.