

# TOB1 (phospho Ser164) Polyclonal Antibody

Catalog # AP67767

## Product Information

---

<b>Application</b>	WB, IHC-P
<b>Primary Accession</b>	<a href="#">P50616</a>
<b>Reactivity</b>	Human, Mouse, Rat
<b>Host</b>	Rabbit
<b>Clonality</b>	Polyclonal
<b>Calculated MW</b>	38155

## Additional Information

---

<b>Gene ID</b>	10140
<b>Other Names</b>	TOB1; TOB; TROB1; Protein Tob1; Transducer of erbB-2 1
<b>Dilution</b>	WB~~Western Blot: 1/500 - 1/2000. Immunohistochemistry: 1/100 - 1/300. ELISA: 1/5000. Not yet tested in other applications. IHC-P~~N/A
<b>Format</b>	Liquid in PBS containing 50% glycerol, 0.5% BSA and 0.09% (W/V) sodium azide.
<b>Storage Conditions</b>	-20°C

## Protein Information

---

<b>Name</b>	TOB1
<b>Synonyms</b>	TOB, TROB1
<b>Function</b>	Anti-proliferative protein; the function is mediated by association with deadenylase subunits of the CCR4-NOT complex (PubMed: <a href="#">23236473</a> , PubMed: <a href="#">8632892</a> ). Mediates CPEB3-accelerated mRNA deadenylation by binding to CPEB3 and recruiting CNOT7 which leads to target mRNA deadenylation and decay (PubMed: <a href="#">21336257</a> ).
<b>Cellular Location</b>	Cytoplasm. Nucleus. Note=Only a small fraction localizes to the cytoplasm except in late S- phase where more than half of proteins become cytoplasmic
<b>Tissue Location</b>	Ubiquitous.

## Background

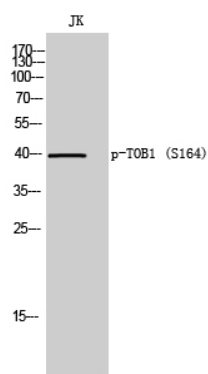
---

Anti-proliferative protein; the function is mediated by association with deadenylase subunits of the CCR4-NOT complex (PubMed:[8632892](#), PubMed:[23236473](#)). Mediates CPEB3-accelerated mRNA

deadenylation by binding to CPEB3 and recruiting CNOT7 which leads to target mRNA deadenylation and decay (PubMed:[21336257](#)).

## Images

---



Western Blot analysis of JK cells using Phospho-TOB1 (S164) Polyclonal Antibody

Please note: All products are 'FOR RESEARCH USE ONLY. NOT FOR USE IN DIAGNOSTIC OR THERAPEUTIC PROCEDURES'.