

# Separase (phospho Ser801) Polyclonal Antibody

Catalog # AP67804

## Product Information

---

<b>Application</b>	WB, IHC-P, IF
<b>Primary Accession</b>	<a href="#">Q14674</a>
<b>Reactivity</b>	Human, Mouse
<b>Host</b>	Rabbit
<b>Clonality</b>	Polyclonal
<b>Calculated MW</b>	233175

## Additional Information

---

<b>Gene ID</b>	9700
<b>Other Names</b>	ESPL1; ESP1; KIAA0165; Separin; Caspase-like protein ESPL1; Extra spindle poles-like 1 protein; Separase
<b>Dilution</b>	WB~~Western Blot: 1/500 - 1/2000. Immunohistochemistry: 1/100 - 1/300. Immunofluorescence: 1/200 - 1/1000. ELISA: 1/40000. Not yet tested in other applications. IHC-P~~N/A IF~~1:50~200
<b>Format</b>	Liquid in PBS containing 50% glycerol, 0.5% BSA and 0.09% (W/V) sodium azide.
<b>Storage Conditions</b>	-20°C

## Protein Information

---

<b>Name</b>	ESPL1
<b>Synonyms</b>	ESP1, KIAA0165
<b>Function</b>	Caspase-like protease, which plays a central role in the chromosome segregation by cleaving the SCC1/RAD21 subunit of the cohesin complex at the onset of anaphase. During most of the cell cycle, it is inactivated by different mechanisms.
<b>Cellular Location</b>	Cytoplasm. Nucleus.

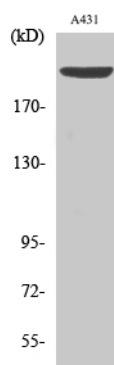
## Background

---

Caspase-like protease, which plays a central role in the chromosome segregation by cleaving the SCC1/RAD21 subunit of the cohesin complex at the onset of anaphase. During most of the cell cycle, it is inactivated by different mechanisms.

## Images

---



Western Blot analysis of various cells using  
Phospho-Separase (S801) Polyclonal Antibody diluted at  
1 : 1000

Please note: All products are 'FOR RESEARCH USE ONLY. NOT FOR USE IN DIAGNOSTIC OR THERAPEUTIC PROCEDURES'.