

Calmodulin (phospho Thr80/S82) Polyclonal Antibody

Catalog # AP67844

Product Information

Application	WB, IHC-P, IF
Primary Accession	P62158
Reactivity	Human, Mouse, Rat
Host	Rabbit
Clonality	Polyclonal

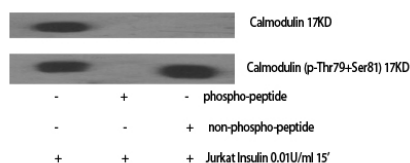
Additional Information

Other Names	CALM1; CALM; CAM; CAM1; CALM2; CAM2; CAMB; CALM3; CALML2; CAM3; CAMC; CAMIII; Calmodulin; CaM
Dilution	WB~~Western Blot: 1/500 - 1/2000. Immunohistochemistry: 1/100 - 1/300. Immunofluorescence: 1/200 - 1/1000. ELISA: 1/5000. Not yet tested in other applications. IHC-P~~N/A IF~~1:50~200
Format	Liquid in PBS containing 50% glycerol, 0.5% BSA and 0.09% (W/V) sodium azide.
Storage Conditions	-20°C

Protein Information

Images

Western Blot analysis of various cells using
Phospho-Calmodulin (T80/S82) Polyclonal Antibody



Please note: All products are 'FOR RESEARCH USE ONLY. NOT FOR USE IN DIAGNOSTIC OR THERAPEUTIC PROCEDURES'.