

Net (phospho Ser357) Polyclonal Antibody

Catalog # AP67852

Product Information

Application	WB, IHC-P, IF, ICC, E
Primary Accession	P41970
Reactivity	Human, Mouse, Monkey
Host	Rabbit
Clonality	Polyclonal
Calculated MW	44240

Additional Information

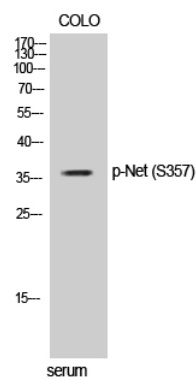
Gene ID	2004
Other Names	ELK3; NET; SAP2; ETS domain-containing protein Elk-3; ETS-related protein ERP; ETS-related protein NET; Serum response factor accessory protein 2; SAP-2; SRF accessory protein 2
Dilution	WB~~Western Blot: 1/500 - 1/2000. Immunohistochemistry: 1/100 - 1/300. Immunofluorescence: 1/200 - 1/1000. ELISA: 1/20000. Not yet tested in other applications. IHC-P~~N/A IF~~1:50~200 ICC~~N/A E~~N/A
Format	Liquid in PBS containing 50% glycerol, 0.5% BSA and 0.09% (W/V) sodium azide.
Storage Conditions	-20°C

Protein Information

Name	ELK3
Synonyms	NET, SAP2
Function	May be a negative regulator of transcription, but can activate transcription when coexpressed with Ras, Src or Mos. Forms a ternary complex with the serum response factor and the ETS and SRF motifs of the Fos serum response element.
Cellular Location	Nucleus.

Background

May be a negative regulator of transcription, but can activate transcription when coexpressed with Ras, Src or Mos. Forms a ternary complex with the serum response factor and the ETS and SRF motifs of the Fos serum response element.



Western Blot analysis of COLO cells using Phospho-Net (S357) Polyclonal Antibody

Please note: All products are 'FOR RESEARCH USE ONLY. NOT FOR USE IN DIAGNOSTIC OR THERAPEUTIC PROCEDURES'.