

CRHR2 Antibody (Center)

Purified Rabbit Polyclonal Antibody (Pab)

Catalog # AP6787c

Product Information

Application	FC, WB, IHC-P, IF, E
Primary Accession	Q13324
Other Accession	P47866
Reactivity	Human
Predicted	Rat
Host	Rabbit
Clonality	Polyclonal
Isotype	Rabbit IgG
Clone Names	RB19234
Calculated MW	47688
Antigen Region	243-272

Additional Information

Gene ID	1395
Other Names	Corticotropin-releasing factor receptor 2, CRF-R-2, CRF-R2, CRFR-2, Corticotropin-releasing hormone receptor 2, CRH-R-2, CRH-R2, CRHR2, CRF2R, CRH2R
Target/Specificity	This CRHR2 antibody is generated from rabbits immunized with a KLH conjugated synthetic peptide between 243-272 amino acids from the Central region of human CRHR2.
Dilution	FC~~1:10~50 WB~~1:1000 IHC-P~~1:100~500 IF~~1:10~50 E~~Use at an assay dependent concentration.
Format	Purified polyclonal antibody supplied in PBS with 0.09% (W/V) sodium azide. This antibody is prepared by Saturated Ammonium Sulfate (SAS) precipitation followed by dialysis against PBS.
Storage	Maintain refrigerated at 2-8°C for up to 2 weeks. For long term storage store at -20°C in small aliquots to prevent freeze-thaw cycles.
Precautions	CRHR2 Antibody (Center) is for research use only and not for use in diagnostic or therapeutic procedures.

Protein Information

Name	CRHR2
-------------	-------

Synonyms

CRF2R, CRH2R

Function

G-protein coupled receptor for CRH (corticotropin-releasing factor), UCN (urocortin), UCN2 and UCN3. Has high affinity for UCN. Ligand binding causes a conformation change that triggers signaling via guanine nucleotide-binding proteins (G proteins) and down-stream effectors, such as adenylate cyclase. Promotes the activation of adenylate cyclase, leading to increased intracellular cAMP levels.

Cellular Location

Cell membrane; Multi-pass membrane protein

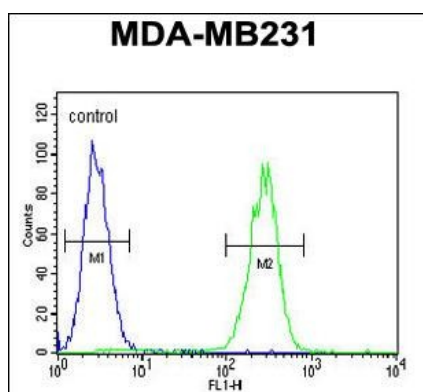
Background

CRHR2 is a receptor for corticotropin releasing factor. It shows high-affinity CRF binding. Also binds to urocortin I, II and III. The activity of this receptor is mediated by G proteins which activate adenylate cyclase.

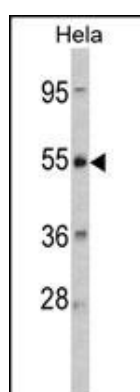
References

Yerges, L.M., et.al., J. Bone Miner. Res. (2009)

Images

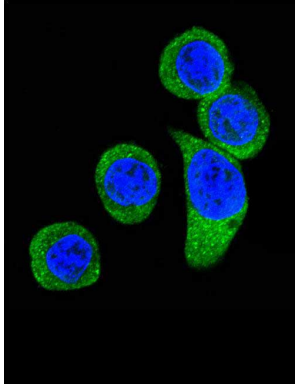
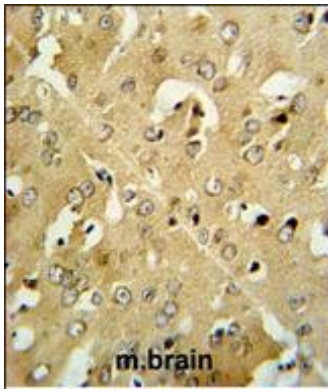


CRHR2 Antibody (Center) (Cat. #AP6787c) flow cytometric analysis of MDA-MB231 cells (right histogram) compared to a negative control cell (left histogram). FITC-conjugated goat-anti-rabbit secondary antibodies were used for the analysis.



Western blot analysis of CRHR2 Antibody (Center) (Cat. #AP6787c) in HeLa cell line lysates (35ug/lane). CRHR2 (arrow) was detected using the purified Pab.

CRHR2 Antibody (Center) (Cat. #AP6787c) IHC analysis in formalin fixed and paraffin embedded mouse brain tissue followed by peroxidase conjugation of the secondary antibody and DAB staining. This data demonstrates the use of the CRHR2 Antibody (Center) for immunohistochemistry. Clinical relevance has not been evaluated.



Confocal immunofluorescent analysis of CRHR2 Antibody (Center)(Cat#AP6787c) with HeLa cell followed by Alexa Fluor 488-conjugated goat anti-rabbit IgG (green).DAPI was used to stain the cell nuclear (blue).

Please note: All products are 'FOR RESEARCH USE ONLY. NOT FOR USE IN DIAGNOSTIC OR THERAPEUTIC PROCEDURES'.