

FKBP11 Antibody (N-term)

Purified Rabbit Polyclonal Antibody (Pab)

Catalog # AP6790a

Product Information

| | |
|--------------------------|------------------------|
| Application | WB, IHC-P, FC, E |
| Primary Accession | Q9NYL4 |
| Other Accession | Q9D1M7 |
| Reactivity | Human, Mouse |
| Host | Rabbit |
| Clonality | Polyclonal |
| Isotype | Rabbit IgG |
| Clone Names | RB19302 |
| Calculated MW | 22180 |
| Antigen Region | 52-82 |

Additional Information

| | |
|---------------------------|--|
| Gene ID | 51303 |
| Other Names | Peptidyl-prolyl cis-trans isomerase FKBP11, PPIase FKBP11, 19 kDa FK506-binding protein, 19 kDa FKBP, FKBP-19, FK506-binding protein 11, FKBP-11, Rotamase, FKBP11, FKBP19 |
| Target/Specificity | This FKBP11 antibody is generated from rabbits immunized with a KLH conjugated synthetic peptide between 52-82 amino acids from the N-terminal region of human FKBP11. |
| Dilution | WB~~1:1000 IHC-P~~1:100~500 FC~~1:10~50 E~~Use at an assay dependent concentration. |
| Format | Purified polyclonal antibody supplied in PBS with 0.09% (W/V) sodium azide. This antibody is purified through a protein A column, followed by peptide affinity purification. |
| Storage | Maintain refrigerated at 2-8°C for up to 2 weeks. For long term storage store at -20°C in small aliquots to prevent freeze-thaw cycles. |
| Precautions | FKBP11 Antibody (N-term) is for research use only and not for use in diagnostic or therapeutic procedures. |

Protein Information

| | |
|-----------------|--------|
| Name | FKBP11 |
| Synonyms | FKBP19 |

Function PPIases accelerate the folding of proteins during protein synthesis.

Cellular Location Membrane; Single-pass membrane protein

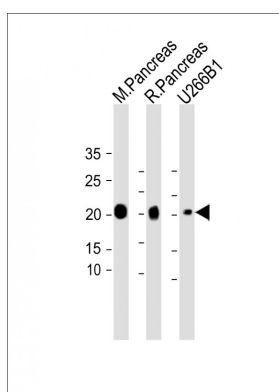
Background

FKBP11 belongs to the FKBP family of peptidyl-prolyl cis/trans isomerases, which catalyze the folding of proline-containing polypeptides. The peptidyl-prolyl isomerase activity of FKBP proteins is inhibited by the immunosuppressant compounds FK506 and rapamycin.

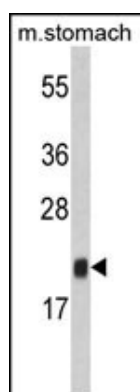
References

Rulten, S.L., et.al., Mamm. Genome 17 (4), 322-331 (2006)

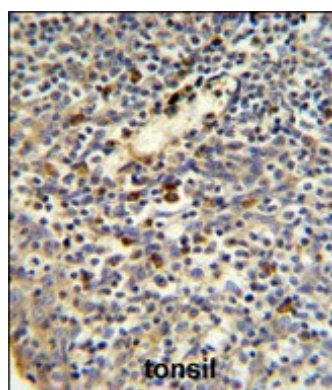
Images



All lanes: Anti-FKBP11 Antibody (N-term) at 1:2000 dilution Lane 1: Mouse Pancreas lysate Lane 2: Rat Pancreas lysate Lane 3: U266B1 whole cell lysate Lysates/proteins at 20 µg per lane. Secondary: Goat Anti-Rabbit IgG, (H+L), Peroxidase conjugated (ASP1615) at 1/15000 dilution. Observed band size: 22 kDa Blocking/Dilution buffer: 5% NFDM/TBST.

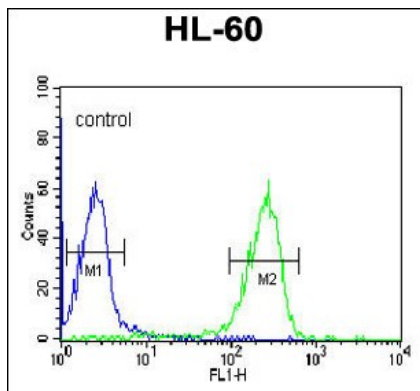


Western blot analysis of FKBP11 Antibody (N-term) (Cat. #AP6790a) in mouse stomach tissue lysates (35ug/lane). FKBP11 (arrow) was detected using the purified Pab.



FKBP11 Antibody (N-term) (Cat. #AP6790a) IHC analysis in formalin fixed and paraffin embedded human tonsil tissue followed by peroxidase conjugation of the secondary antibody and DAB staining. This data demonstrates the use of the FKBP11 Antibody (N-term) for immunohistochemistry. Clinical relevance has not been evaluated.

FKBP11 Antibody (N-term) (Cat. #AP6790a) flow cytometric analysis of HL-60 cells (right histogram)



compared to a negative control cell (left histogram). FITC-conjugated goat-anti-rabbit secondary antibodies were used for the analysis.

Citations

- [FKBP11 protects intestinal epithelial cells against inflammation \$\square\$ induced apoptosis via the JNK \$\square\$ caspase pathway in Crohn's disease.](#)

Please note: All products are 'FOR RESEARCH USE ONLY. NOT FOR USE IN DIAGNOSTIC OR THERAPEUTIC PROCEDURES'.