

# FUCA1 Antibody (Center)

Purified Rabbit Polyclonal Antibody (Pab)

Catalog # AP6791c

## Product Information

---

|                          |                        |
|--------------------------|------------------------|
| <b>Application</b>       | WB, IHC-P, FC, E       |
| <b>Primary Accession</b> | <a href="#">P04066</a> |
| <b>Other Accession</b>   | <a href="#">Q60HF8</a> |
| <b>Reactivity</b>        | Human                  |
| <b>Predicted</b>         | Monkey                 |
| <b>Host</b>              | Rabbit                 |
| <b>Clonality</b>         | Polyclonal             |
| <b>Isotype</b>           | Rabbit IgG             |
| <b>Clone Names</b>       | RB19323                |
| <b>Calculated MW</b>     | 53689                  |
| <b>Antigen Region</b>    | 265-294                |

## Additional Information

---

|                           |   |
|---------------------------|---|
| <b>Gene ID</b>            | 2517  |
| <b>Other Names</b>        | Tissue alpha-L-fucosidase, Alpha-L-fucosidase I, Alpha-L-fucoside fucohydrolase 1, Alpha-L-fucosidase 1, FUCA1  |
| <b>Target/Specificity</b> | This FUCA1 antibody is generated from rabbits immunized with a KLH conjugated synthetic peptide between 265-294 amino acids from the Central region of human FUCA1.                       |
| <b>Dilution</b>           | WB~~1:1000 IHC-P~~1:100~500 FC~~1:10~50 E~~Use at an assay dependent concentration.   |
| <b>Format</b>             | Purified polyclonal antibody supplied in PBS with 0.09% (W/V) sodium azide. This antibody is prepared by Saturated Ammonium Sulfate (SAS) precipitation followed by dialysis against PBS. |
| <b>Storage</b>            | Maintain refrigerated at 2-8°C for up to 2 weeks. For long term storage store at -20°C in small aliquots to prevent freeze-thaw cycles.   |
| <b>Precautions</b>        | FUCA1 Antibody (Center) is for research use only and not for use in diagnostic or therapeutic procedures.   |

## Protein Information

---

|                 |   |
|-----------------|---|
| <b>Name</b>     | FUCA1 ( <a href="#">HGNC:4006</a> )                                     |
| <b>Function</b> | Alpha-L-fucosidase is responsible for hydrolyzing the alpha- 1,6-linked |

fucose joined to the reducing-end N-acetylglucosamine of the carbohydrate moieties of glycoproteins.

## Cellular Location

Lysosome.

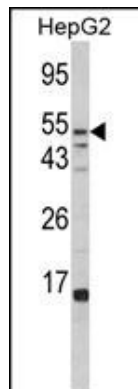
## Background

FUCA1 is a lysosomal enzyme involved in the degradation of fucose-containing glycoproteins and glycolipids. Mutations in this gene are associated with fucosidosis (FUCA1D), which is an autosomal recessive lysosomal storage disease. A pseudogene of this locus is present on chr 2.

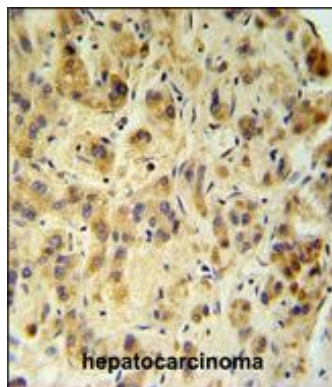
## References

Palmieri, R.T., et.al., Cancer Epidemiol. Biomarkers Prev. 17 (12), 3567-3572 (2008)

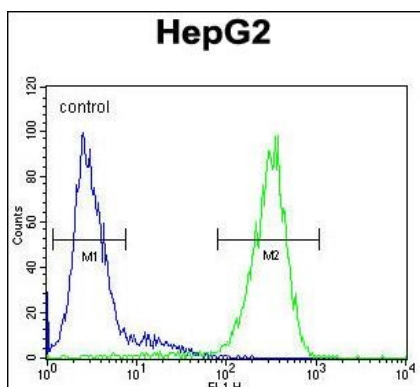
## Images



Western blot analysis of FUCA1 Antibody (Center) (Cat. #AP6791c) in HepG2 cell line lysates (35ug/lane). FUCA1 (arrow) was detected using the purified Pab.



FUCA1 Antibody (Center) (Cat. #AP6791c) IHC analysis in formalin fixed and paraffin embedded human hepatocarcinoma followed by peroxidase conjugation of the secondary antibody and DAB staining. This data demonstrates the use of the FUCA1 Antibody (Center) for immunohistochemistry. Clinical relevance has not been evaluated.



FUCA1 Antibody (Center) (Cat. #AP6791c) flow cytometric analysis of HepG2 cells (right histogram) compared to a negative control cell (left histogram). FITC-conjugated goat-anti-rabbit secondary antibodies were used for the analysis.

Please note: All products are 'FOR RESEARCH USE ONLY. NOT FOR USE IN DIAGNOSTIC OR THERAPEUTIC PROCEDURES'.