

# FSHB Antibody (Center T70)

Purified Rabbit Polyclonal Antibody (Pab)

Catalog # AP6797c

## Product Information

---

<b>Application</b>	WB, E
<b>Primary Accession</b>	<a href="#">P01225</a>
<b>Other Accession</b>	<a href="#">Q6IY73</a>
<b>Reactivity</b>	Human
<b>Predicted</b>	Rabbit
<b>Host</b>	Rabbit
<b>Clonality</b>	Polyclonal
<b>Isotype</b>	Rabbit IgG
<b>Clone Names</b>	RB19519
<b>Calculated MW</b>	14700
<b>Antigen Region</b>	55-83

## Additional Information

---

<b>Gene ID</b>	2488
<b>Other Names</b>	Follitropin subunit beta, Follicle-stimulating hormone beta subunit, FSH-B, FSH-beta, Follitropin beta chain, FSHB
<b>Target/Specificity</b>	This FSHB antibody is generated from rabbits immunized with a KLH conjugated synthetic peptide between 55-83 amino acids from the Central region of human FSHB.
<b>Dilution</b>	WB~~1:1000 E~~Use at an assay dependent concentration.
<b>Format</b>	Purified polyclonal antibody supplied in PBS with 0.09% (W/V) sodium azide. This antibody is prepared by Saturated Ammonium Sulfate (SAS) precipitation followed by dialysis against PBS.
<b>Storage</b>	Maintain refrigerated at 2-8°C for up to 2 weeks. For long term storage store at -20°C in small aliquots to prevent freeze-thaw cycles.
<b>Precautions</b>	FSHB Antibody (Center T70) is for research use only and not for use in diagnostic or therapeutic procedures.

## Protein Information

---

<b>Name</b>	FSHB
<b>Function</b>	Together with the alpha chain CGA constitutes follitropin, the follicle-stimulating hormone, and provides its biological specificity to the

hormone heterodimer. Binds FSHR, a G protein-coupled receptor, on target cells to activate downstream signaling pathways (PubMed:[24692546](#), PubMed:[2494176](#)). Follitropin is involved in follicle development and spermatogenesis in reproductive organs (PubMed:[407105](#), PubMed:[8220432](#)).

#### Cellular Location

Secreted. Note=Efficient secretion requires dimerization with CGA

## Background

---

FSHB stimulates development of follicle and spermatogenesis in the reproductive organs.

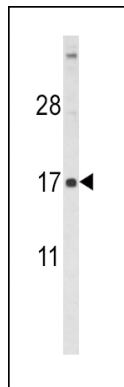
## References

---

Grigorova,M., et.al., J. Clin. Endocrinol. Metab. (2009)

## Images

---



Western blot analysis of FSHB Antibody (Center T70) (Cat. #AP6797c) in HL60 cell line lysates (35ug/lane). FSHB (arrow) was detected using the purified Pab.

Please note: All products are 'FOR RESEARCH USE ONLY. NOT FOR USE IN DIAGNOSTIC OR THERAPEUTIC PROCEDURES'.