

# ErbB-3 (phospho Tyr1289) Polyclonal Antibody

Catalog # AP68114

## Product Information

---

<b>Application</b>	WB, IHC-P, IF
<b>Primary Accession</b>	<a href="#">P21860</a>
<b>Reactivity</b>	Human, Mouse, Rat
<b>Host</b>	Rabbit
<b>Clonality</b>	Polyclonal
<b>Calculated MW</b>	148098

## Additional Information

---

<b>Gene ID</b>	2065
<b>Other Names</b>	ERBB3; HER3; Receptor tyrosine-protein kinase erbB-3; Proto-oncogene-like protein c-ErbB-3; Tyrosine kinase-type cell surface receptor HER3
<b>Dilution</b>	WB~~Western Blot: 1/500 - 1/2000. Immunohistochemistry: 1/100 - 1/300. Immunofluorescence: 1/200 - 1/1000. ELISA: 1/10000. Not yet tested in other applications. IHC-P~~N/A IF~~1:50~200
<b>Format</b>	Liquid in PBS containing 50% glycerol, 0.5% BSA and 0.09% (W/V) sodium azide.
<b>Storage Conditions</b>	-20°C

## Protein Information

---

<b>Name</b>	ERBB3
<b>Synonyms</b>	HER3
<b>Function</b>	Tyrosine-protein kinase that plays an essential role as cell surface receptor for neuregulins. Binds to neuregulin-1 (NRG1) and is activated by it; ligand-binding increases phosphorylation on tyrosine residues and promotes its association with the p85 subunit of phosphatidylinositol 3-kinase (PubMed: <a href="#">20682778</a> ). May also be activated by CSPG5 (PubMed: <a href="#">15358134</a> ). Involved in the regulation of myeloid cell differentiation (PubMed: <a href="#">27416908</a> ).
<b>Cellular Location</b>	[Isoform 1]: Cell membrane; Single-pass type I membrane protein
<b>Tissue Location</b>	Epithelial tissues and brain.

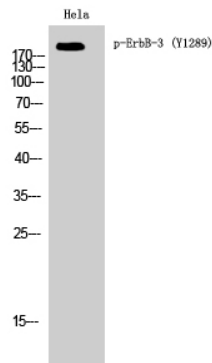
## Background

---

Tyrosine-protein kinase that plays an essential role as cell surface receptor for neuregulins. Binds to neuregulin-1 (NRG1) and is activated by it; ligand-binding increases phosphorylation on tyrosine residues and promotes its association with the p85 subunit of phosphatidylinositol 3-kinase (PubMed:[20682778](#)). May also be activated by CSPG5 (PubMed:[15358134](#)).

## Images

---



Western Blot analysis of HeLa cells using Phospho-ErbB-3 (Y1289) Polyclonal Antibody diluted at 1 : 1000 cells nucleus extracted by Minute TM Cytoplasmic and Nuclear Fractionation kit (SC-003, Invent biotech, MN, USA).

Please note: All products are 'FOR RESEARCH USE ONLY. NOT FOR USE IN DIAGNOSTIC OR THERAPEUTIC PROCEDURES'.