

Na⁺/K⁺-ATPase α 1 (Phospho-Tyr260) Polyclonal Antibody

Catalog # AP68158

Product Information

Application	WB
Primary Accession	P05023
Reactivity	Human, Mouse, Rat
Host	Rabbit
Clonality	Polyclonal
Calculated MW	112896

Additional Information

Gene ID	476
Other Names	Sodium/potassium-transporting ATPase subunit alpha-1 (Na ⁺)/K ⁺ ATPase alpha-1 subunit (EC 3.6.3.9) (Sodium pump subunit alpha-1)
Dilution	WB~~WB 1:500-2000, ELISA 1:10000-20000
Format	Liquid in PBS containing 50% glycerol, 0.5% BSA and 0.09% (W/V) sodium azide.
Storage Conditions	-20°C

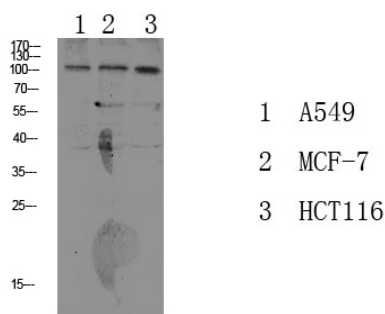
Protein Information

Name	ATP1A1
Function	This is the catalytic component of the active enzyme, which catalyzes the hydrolysis of ATP coupled with the exchange of sodium and potassium ions across the plasma membrane. This action creates the electrochemical gradient of sodium and potassium ions, providing the energy for active transport of various nutrients (PubMed: 29499166 , PubMed: 30388404). Could also be part of an osmosensory signaling pathway that senses body-fluid sodium levels and controls salt intake behavior as well as voluntary water intake to regulate sodium homeostasis (By similarity).
Cellular Location	Cell membrane {ECO:0000250 UniProtKB:Q8VDN2}; Multi-pass membrane protein. Basolateral cell membrane {ECO:0000250 UniProtKB:P06685}; Multi-pass membrane protein. Cell membrane, sarcolemma; Multi-pass membrane protein. Cell projection, axon {ECO:0000250 UniProtKB:P06685}. Melanosome. Note=Identified by mass spectrometry in melanosome fractions from stage I to stage IV

Background

This is the catalytic component of the active enzyme, which catalyzes the hydrolysis of ATP coupled with the exchange of sodium and potassium ions across the plasma membrane. This action creates the electrochemical gradient of sodium and potassium ions, providing the energy for active transport of various nutrients.

Images



Please note: All products are 'FOR RESEARCH USE ONLY. NOT FOR USE IN DIAGNOSTIC OR THERAPEUTIC PROCEDURES'.