

4.1G Polyclonal Antibody

Catalog # AP68199

Product Information

Application	WB, IHC-P
Primary Accession	O43491
Reactivity	Human
Host	Rabbit
Clonality	Polyclonal
Calculated MW	112588

Additional Information

Gene ID	2037
Other Names	EPB41L2; Band 4.1-like protein 2; Generally expressed protein 4.1; 4.1G
Dilution	WB~~Western Blot: 1/500 - 1/2000. Immunohistochemistry: 1/100 - 1/300. ELISA: 1/40000. Not yet tested in other applications. IHC-P~~N/A
Format	Liquid in PBS containing 50% glycerol, 0.5% BSA and 0.09% (W/V) sodium azide.
Storage Conditions	-20°C

Protein Information

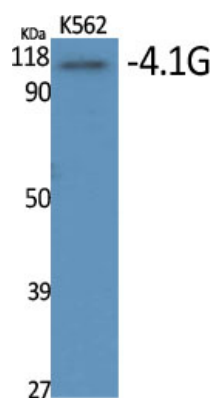
Name	EPB41L2 (HGNC:3379)
Function	Required for dynein-dynactin complex and NUMA1 recruitment at the mitotic cell cortex during anaphase (PubMed: 23870127).
Cellular Location	Cytoplasm, cytoskeleton. Cytoplasm, cell cortex. Cell membrane
Tissue Location	Widely expressed.

Background

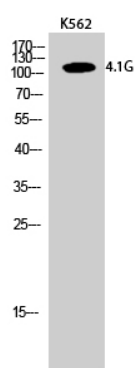
Required for dynein-dynactin complex and NUMA1 recruitment at the mitotic cell cortex during anaphase (PubMed:[23870127](#)).

Images

Western Blot analysis of various cells using 4.1G



Polyclonal Antibody



Western Blot analysis of K562 cells using 4.1G Polyclonal Antibody

Please note: All products are 'FOR RESEARCH USE ONLY. NOT FOR USE IN DIAGNOSTIC OR THERAPEUTIC PROCEDURES'.