

A Cyclase V/VI Polyclonal Antibody

Catalog # AP68215

Product Information

Application	WB, IHC-P, IF, ICC, E
Primary Accession	O95622 , O43306
Reactivity	Human, Mouse, Rat
Host	Rabbit
Clonality	Polyclonal
Calculated MW	138908

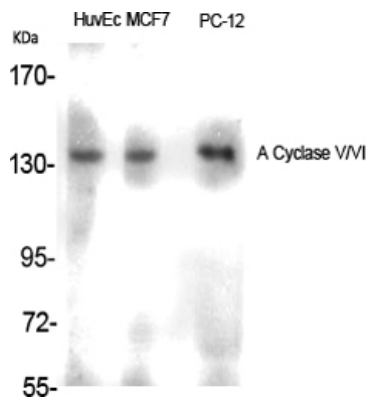
Additional Information

Gene ID	111
Other Names	ADCY5; Adenylate cyclase type 5; ATP pyrophosphate-lyase 5; Adenylate cyclase type V; Adenylyl cyclase 5; ADCY6; KIAA0422; Adenylate cyclase type 6; ATP pyrophosphate-lyase 6; Adenylate cyclase type VI; Adenylyl cyclase 6; Ca(2+)-inhibitabl
Dilution	WB~~Western Blot: 1/500 - 1/2000. Immunohistochemistry: 1/100 - 1/300. Immunofluorescence: 1/200 - 1/1000. ELISA: 1/10000. Not yet tested in other applications. IHC-P~~N/A IF~~1:50~200 ICC~~N/A E~~N/A
Format	Liquid in PBS containing 50% glycerol, 0.5% BSA and 0.09% (W/V) sodium azide.
Storage Conditions	-20°C

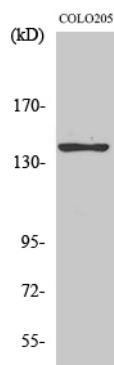
Protein Information

Name	ADCY5
Function	Catalyzes the formation of the signaling molecule cAMP in response to G-protein signaling (PubMed: 15385642 , PubMed: 24700542 , PubMed: 26206488). Mediates signaling downstream of ADRB1 (PubMed: 24700542). Regulates the increase of free cytosolic Ca(2+) in response to increased blood glucose levels and contributes to the regulation of Ca(2+)-dependent insulin secretion (PubMed: 24740569).
Cellular Location	Cell membrane; Multi-pass membrane protein. Cell projection, cilium {ECO:0000250 UniProtKB:P84309}
Tissue Location	Detected in pancreas islets (at protein level). Expressed in the brain, with high expression in the corpus striatum (PubMed:26085604).

Images



Western Blot analysis of various cells using A Cyclase V/VI Polyclonal Antibody



Western Blot analysis of COLO205 cells using A Cyclase V/VI Polyclonal Antibody

Please note: All products are 'FOR RESEARCH USE ONLY. NOT FOR USE IN DIAGNOSTIC OR THERAPEUTIC PROCEDURES'.