

AASS Polyclonal Antibody

Catalog # AP68224

Product Information

Application	WB
Primary Accession	Q9UDR5
Reactivity	Human
Host	Rabbit
Clonality	Polyclonal
Calculated MW	102132

Additional Information

Gene ID	10157
Other Names	AASS; Alpha-aminoadipic semialdehyde synthase; mitochondrial; LKR/SDH
Dilution	WB~~Western Blot: 1/500 - 1/2000. ELISA: 1/10000. Not yet tested in other applications.
Format	Liquid in PBS containing 50% glycerol, 0.5% BSA and 0.09% (W/V) sodium azide.
Storage Conditions	-20°C

Protein Information

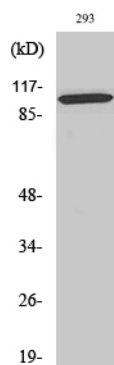
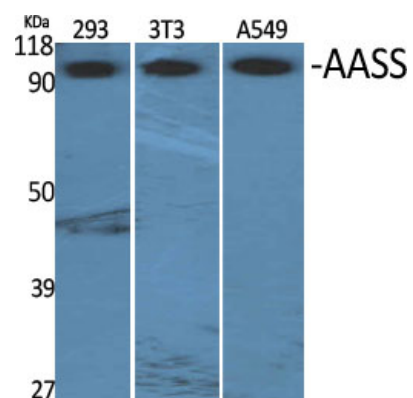
Name	AASS (HGNC:17366)
Function	Bifunctional enzyme that catalyzes the first two steps in lysine degradation.
Cellular Location	Mitochondrion.
Tissue Location	Expressed in all 16 tissues examined with highest expression in the liver

Background

Bifunctional enzyme that catalyzes the first two steps in lysine degradation. The N-terminal and the C-terminal contain lysine-ketoglutarate reductase and saccharopine dehydrogenase activity, respectively.

Images

Western Blot analysis of various cells using AASS
Polyclonal Antibody



Western Blot analysis of HeLa cells using AASS Polyclonal Antibody

Please note: All products are 'FOR RESEARCH USE ONLY. NOT FOR USE IN DIAGNOSTIC OR THERAPEUTIC PROCEDURES'.