

ABCB7 Polyclonal Antibody

Catalog # AP68229

Product Information

Application	WB, IHC-P, IF, ICC, E
Primary Accession	O75027
Reactivity	Human, Rat, Mouse
Host	Rabbit
Clonality	Polyclonal
Calculated MW	82641

Additional Information

Gene ID	22
Other Names	ABCB7; ABC7; ATP-binding cassette sub-family B member 7; mitochondrial; ATP-binding cassette transporter 7; ABC transporter 7 protein
Dilution	WB~~Western Blot: 1/500 - 1/2000. Immunohistochemistry: 1/100 - 1/300. ELISA: 1/40000. Not yet tested in other applications. IHC-P~~N/A IF~~1:50~200 ICC~~N/A E~~N/A
Format	Liquid in PBS containing 50% glycerol, 0.5% BSA and 0.09% (W/V) sodium azide.
Storage Conditions	-20°C

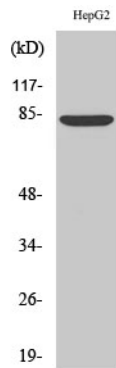
Protein Information

Name	ABCB7 (HGNC:48)
Synonyms	ABC7
Function	Exports glutathione-coordinated iron-sulfur clusters such as [2Fe-2S]-(GS) ₄ cluster from the mitochondria to the cytosol in an ATP- dependent manner allowing the assembly of the cytosolic iron-sulfur (Fe/S) cluster-containing proteins and participates in iron homeostasis (PubMed: 10196363 , PubMed: 17192393 , PubMed: 33157103). Moreover, through a functional complex formed of ABCB7, FECH and ABCB10, also plays a role in the cellular iron homeostasis, mitochondrial function and heme biosynthesis (PubMed: 30765471). In cardiomyocytes, regulates cellular iron homeostasis and cellular reactive oxygen species (ROS) levels through its interaction with COX4I1 (By similarity). May also play a role in hematopoiesis (By similarity).
Cellular Location	Mitochondrion inner membrane {ECO:0000250 UniProtKB:P40416}; Multi-pass membrane protein {ECO:0000250 UniProtKB:P40416}

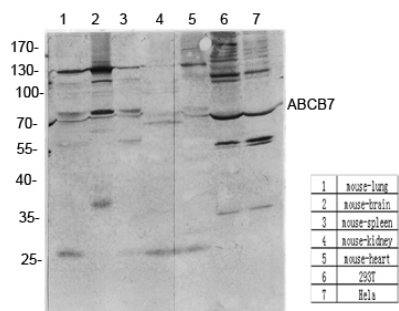
Background

Could be involved in the transport of heme from the mitochondria to the cytosol. Plays a central role in the maturation of cytosolic iron-sulfur (Fe/S) cluster-containing proteins.

Images



Western Blot analysis of various cells using ABCB7 Polyclonal Antibody diluted at 1 : 1000



Western Blot analysis of various cells using antibody diluted at 1:1000. Secondary antibody was diluted at 1:20000

Please note: All products are 'FOR RESEARCH USE ONLY. NOT FOR USE IN DIAGNOSTIC OR THERAPEUTIC PROCEDURES'.