

# ABCC13 Polyclonal Antibody

Catalog # AP68231

## Product Information

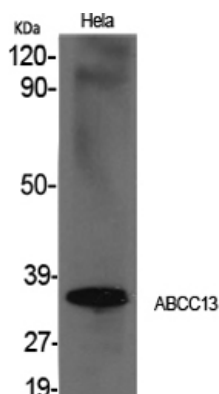
Application	WB, IHC-P
Primary Accession	<a href="#">Q9NSE7</a>
Reactivity	Human
Host	Rabbit
Clonality	Polyclonal

## Additional Information

Other Names	ABCC13; C21orf73; PRED6; Putative ATP-binding cassette sub-family C member 13
Dilution	WB~~Western Blot: 1/500 - 1/2000. Immunohistochemistry: 1/100 - 1/300. ELISA: 1/40000. Not yet tested in other applications. IHC-P~~N/A
Format	Liquid in PBS containing 50% glycerol, 0.5% BSA and 0.09% (W/V) sodium azide.
Storage Conditions	-20°C

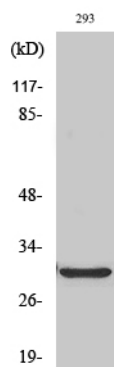
## Protein Information

## Images



Western Blot analysis of various cells using ABCC13 Polyclonal Antibody cells nucleus extracted by Minute TM Cytoplasmic and Nuclear Fractionation kit (SC-003, Invent biotech, MN, USA).

Western Blot analysis of HT29 cells using ABCC13 Polyclonal Antibody cells nucleus extracted by Minute TM Cytoplasmic and Nuclear Fractionation kit (SC-003, Invent biotech, MN, USA).



Please note: All products are 'FOR RESEARCH USE ONLY. NOT FOR USE IN DIAGNOSTIC OR THERAPEUTIC PROCEDURES'.