

# ABCF1 Polyclonal Antibody

Catalog # AP68234

## Product Information

---

<b>Application</b>	WB, E
<b>Primary Accession</b>	<a href="#">Q8NE71</a>
<b>Reactivity</b>	Human, Mouse, Rat
<b>Host</b>	Rabbit
<b>Clonality</b>	Polyclonal
<b>Calculated MW</b>	95926

## Additional Information

---

<b>Gene ID</b>	23
<b>Other Names</b>	ABCF1; ABC50; ATP-binding cassette sub-family F member 1; ATP-binding cassette 50; TNF-alpha-stimulated ABC protein
<b>Dilution</b>	WB~~Western Blot: 1/500 - 1/2000. ELISA: 1/10000. Not yet tested in other applications. E~~N/A
<b>Format</b>	Liquid in PBS containing 50% glycerol, 0.5% BSA and 0.09% (W/V) sodium azide.
<b>Storage Conditions</b>	-20°C

## Protein Information

---

<b>Name</b>	ABCF1
<b>Synonyms</b>	ABC50
<b>Function</b>	Isoform 2 is required for efficient Cap- and IRES-mediated mRNA translation initiation. Isoform 2 is not involved in the ribosome biogenesis.
<b>Cellular Location</b>	[Isoform 2]: Cytoplasm. Nucleus, nucleoplasm. Nucleus envelope
<b>Tissue Location</b>	Ubiquitous..

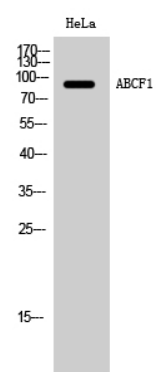
## Background

---

Isoform 2 is required for efficient Cap- and IRES- mediated mRNA translation initiation. Isoform 2 is not involved in the ribosome biogenesis.

## Images

---



Western Blot analysis of HeLa cells using ABCF1 Polyclonal Antibody

Please note: All products are 'FOR RESEARCH USE ONLY. NOT FOR USE IN DIAGNOSTIC OR THERAPEUTIC PROCEDURES'.