

# ABHD8 Polyclonal Antibody

Catalog # AP68246

## Product Information

---

Application	WB, IHC-P
Primary Accession	<a href="#">Q96I13</a>
Reactivity	Human, Mouse
Host	Rabbit
Clonality	Polyclonal
Calculated MW	47331

## Additional Information

---

Gene ID	79575
Other Names	ABHD8; Abhydrolase domain-containing protein 8
Dilution	WB~~Western Blot: 1/500 - 1/2000. Immunohistochemistry: 1/100 - 1/300. ELISA: 1/40000. Not yet tested in other applications. IHC-P~~N/A
Format	Liquid in PBS containing 50% glycerol, 0.5% BSA and 0.09% (W/V) sodium azide.
Storage Conditions	-20°C

## Protein Information

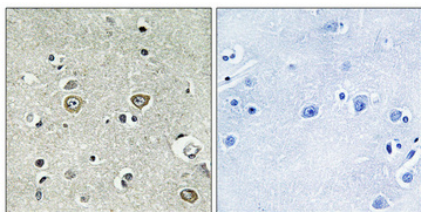
---

Name	ABHD8 ( <a href="#">HGNC:23759</a> )
Function	Negatively regulates NLRP3-driven inflammation (PubMed: <a href="#">39225180</a> ). Promotes NLRP3 degradation through the chaperone- mediated autophagy (CMA) pathway, hence attenuating inflammasome activation and IL1B secretion. Acts by recruiting palmitoyltransferase ZDHHC12 to NLRP3, facilitating NLRP3 palmitoylation and subsequent degradation (PubMed: <a href="#">39225180</a> ).
Cellular Location	Cytoplasm.

## Images

---

Immunohistochemical analysis of paraffin-embedded Human brain. Antibody was diluted at 1:100(4°,overnight). High-pressure and temperature Tris-EDTA,pH8.0 was used for antigen retrieval. Negative



ctrl (right) obtained from antibody was pre-absorbed by immunogen peptide.

Please note: All products are 'FOR RESEARCH USE ONLY. NOT FOR USE IN DIAGNOSTIC OR THERAPEUTIC PROCEDURES'.