

ACBP Polyclonal Antibody

Catalog # AP68256

Product Information

Application	WB, IHC-P
Primary Accession	P07108
Reactivity	Human
Host	Rabbit
Clonality	Polyclonal
Calculated MW	10044

Additional Information

Gene ID	1622
Other Names	DBI; Acyl-CoA-binding protein; ACBP; Diazepam-binding inhibitor; DBI; Endozepine; EP
Dilution	WB~~Western Blot: 1/500 - 1/2000. Immunohistochemistry: 1/100 - 1/300. ELISA: 1/10000. Not yet tested in other applications. IHC-P~~N/A
Format	Liquid in PBS containing 50% glycerol, 0.5% BSA and 0.09% (W/V) sodium azide.
Storage Conditions	-20°C

Protein Information

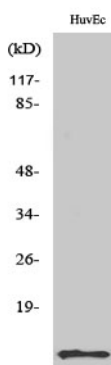
Name	DBI
Function	Binds medium- and long-chain acyl-CoA esters with very high affinity and may function as an intracellular carrier of acyl-CoA esters. It is also able to displace diazepam from the benzodiazepine (BZD) recognition site located on the GABA type A receptor. It is therefore possible that this protein also acts as a neuropeptide to modulate the action of the GABA receptor.
Cellular Location	Endoplasmic reticulum. Golgi apparatus Note=Golgi localization is dependent on ligand binding (PubMed:17953517).
Tissue Location	Isoform 1 is ubiquitous, with a moderate expression level. Isoform 2 is ubiquitous with high level in liver and adipose tissue. Isoform 3 is ubiquitous with strong expression in adipose tissue and heart.

Background

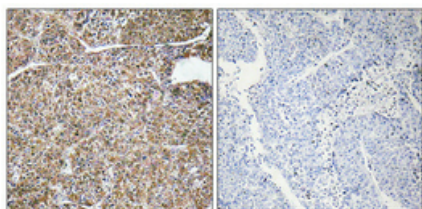
Binds medium- and long-chain acyl-CoA esters with very high affinity and may function as an intracellular

carrier of acyl-CoA esters. It is also able to displace diazepam from the benzodiazepine (BZD) recognition site located on the GABA type A receptor. It is therefore possible that this protein also acts as a neuropeptide to modulate the action of the GABA receptor.

Images



Western Blot analysis of various cells using ACBP Polyclonal Antibody



Immunohistochemical analysis of paraffin-embedded Human lung cancer. Antibody was diluted at 1:100(4°,overnight). High-pressure and temperature Tris-EDTA,pH8.0 was used for antigen retrieval. Negative contrl (right) obtaned from antibody was pre-absorbed by immunogen peptide.

Please note: All products are 'FOR RESEARCH USE ONLY. NOT FOR USE IN DIAGNOSTIC OR THERAPEUTIC PROCEDURES'.