

AChE Polyclonal Antibody

Catalog # AP68261

Product Information

Application	WB, IHC-P
Primary Accession	P22303
Reactivity	Human, Mouse, Rat
Host	Rabbit
Clonality	Polyclonal
Calculated MW	67796

Additional Information

Gene ID	43
Other Names	ACHE; Acetylcholinesterase; AChE
Dilution	WB~~Western Blot: 1/500 - 1/2000. Immunohistochemistry: 1/100 - 1/300. ELISA: 1/40000. Not yet tested in other applications. IHC-P~~N/A
Format	Liquid in PBS containing 50% glycerol, 0.5% BSA and 0.09% (W/V) sodium azide.
Storage Conditions	-20°C

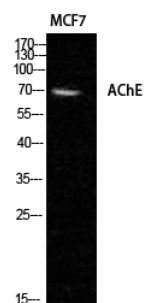
Protein Information

Name	ACHE (HGNC:108)
Function	Hydrolyzes rapidly the acetylcholine neurotransmitter released into the synaptic cleft allowing to terminate the signal transduction at the neuromuscular junction. Role in neuronal apoptosis.
Cellular Location	Synapse. Secreted. Cell membrane; Peripheral membrane protein [Isoform H]; Cell membrane; Lipid- anchor, GPI-anchor; Extracellular side
Tissue Location	Isoform H is highly expressed in erythrocytes.

Background

Terminates signal transduction at the neuromuscular junction by rapid hydrolysis of the acetylcholine released into the synaptic cleft. Role in neuronal apoptosis.

Images



Western Blot analysis of MCF7 cells using AChE Polyclonal Antibody diluted at 1 : 1000

Please note: All products are 'FOR RESEARCH USE ONLY. NOT FOR USE IN DIAGNOSTIC OR THERAPEUTIC PROCEDURES'.