

Actin α 1 Polyclonal Antibody

Catalog # AP68280

Product Information

Application	WB, IHC-P
Primary Accession	P68133
Reactivity	Human, Mouse, Rat
Host	Rabbit
Clonality	Polyclonal
Calculated MW	42051

Additional Information

Gene ID	58
Other Names	ACTA1; ACTA; Actin; alpha skeletal muscle; Alpha-actin-1
Dilution	WB~~Western Blot: 1/500 - 1/2000. Immunohistochemistry: 1/100 - 1/300. ELISA: 1/20000. Not yet tested in other applications. IHC-P~~N/A
Format	Liquid in PBS containing 50% glycerol, 0.5% BSA and 0.09% (W/V) sodium azide.
Storage Conditions	-20°C

Protein Information

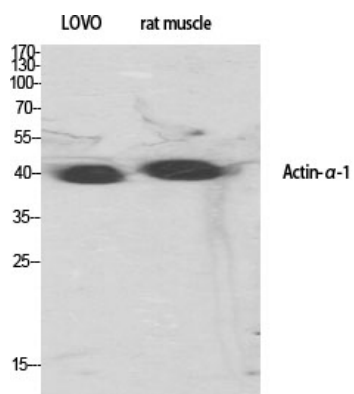
Name	ACTA1
Synonyms	ACTA
Function	Actins are highly conserved proteins that are involved in various types of cell motility and are ubiquitously expressed in all eukaryotic cells.
Cellular Location	Cytoplasm, cytoskeleton.

Background

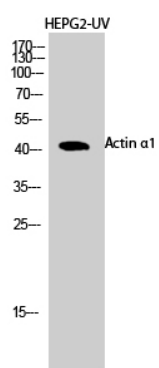
Actins are highly conserved proteins that are involved in various types of cell motility and are ubiquitously expressed in all eukaryotic cells.

Images

Western Blot analysis of various cells using Actin α 1



Polyclonal Antibody diluted at 1 : 500



Western Blot analysis of HEPG2-UV cells using Actin α 1
Polyclonal Antibody diluted at 1 : 500

Please note: All products are 'FOR RESEARCH USE ONLY. NOT FOR USE IN DIAGNOSTIC OR THERAPEUTIC PROCEDURES'.