

Actin α 3 Polyclonal Antibody

Catalog # AP68281

Product Information

Application	WB, IHC-P, IF
Primary Accession	P63267
Reactivity	Human, Mouse, Rat
Host	Rabbit
Clonality	Polyclonal
Calculated MW	41877

Additional Information

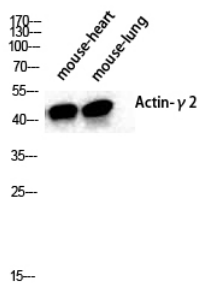
Gene ID	72
Other Names	ACTG2; ACTA3; ACTL3; ACTSG; Actin; gamma-enteric smooth muscle; Alpha-actin-3; Gamma-2-actin; Smooth muscle gamma-actin
Dilution	WB~~Western Blot: 1/500 - 1/2000. Immunohistochemistry: 1/100 - 1/300. Immunofluorescence: 1/200 - 1/1000. ELISA: 1/20000. Not yet tested in other applications. IHC-P~~N/A IF~~1:50~200
Format	Liquid in PBS containing 50% glycerol, 0.5% BSA and 0.09% (W/V) sodium azide.
Storage Conditions	-20°C

Protein Information

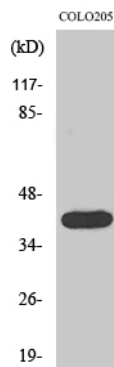
Name	ACTG2
Synonyms	ACTA3, ACTL3, ACTSG
Function	Actins are highly conserved proteins that are involved in various types of cell motility and are ubiquitously expressed in all eukaryotic cells.
Cellular Location	Cytoplasm, cytoskeleton.
Tissue Location	In the intestine, abundantly expressed in smooth muscle cells of muscularis mucosa and muscularis propria. Also detected in intestinal vascular smooth muscle cells

Background

Actins are highly conserved proteins that are involved in various types of cell motility and are ubiquitously expressed in all eukaryotic cells.



Western Blot analysis of various cells using Actin α3
Polyclonal Antibody diluted at 1 : 2000



Western Blot analysis of COLO205 cells using Actin α3
Polyclonal Antibody diluted at 1 : 2000

Please note: All products are 'FOR RESEARCH USE ONLY. NOT FOR USE IN DIAGNOSTIC OR THERAPEUTIC PROCEDURES'.