

Actin- κ Polyclonal Antibody

Catalog # AP68288

Product Information

Application	WB
Primary Accession	Q562R1
Reactivity	Human, Mouse
Host	Rabbit
Clonality	Polyclonal
Calculated MW	42003

Additional Information

Gene ID	345651
Other Names	ACTBL2; Beta-actin-like protein 2; Kappa-actin
Dilution	WB~~Western Blot: 1/500 - 1/2000. ELISA: 1/20000. Not yet tested in other applications.
Format	Liquid in PBS containing 50% glycerol, 0.5% BSA and 0.09% (W/V) sodium azide.
Storage Conditions	-20°C

Protein Information

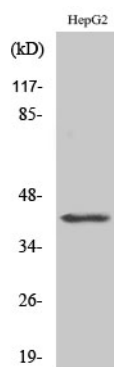
Name	ACTBL2
Function	Actins are highly conserved proteins that are involved in various types of cell motility and are ubiquitously expressed in all eukaryotic cells.
Cellular Location	Cytoplasm, cytoskeleton.

Background

Actins are highly conserved proteins that are involved in various types of cell motility and are ubiquitously expressed in all eukaryotic cells.

Images

Western Blot analysis of various cells using Actin- κ Polyclonal Antibody



Please note: All products are 'FOR RESEARCH USE ONLY. NOT FOR USE IN DIAGNOSTIC OR THERAPEUTIC PROCEDURES'.