

ADAM32 Polyclonal Antibody

Catalog # AP68293

Product Information

Application	WB
Primary Accession	Q8TC27
Reactivity	Human
Host	Rabbit
Clonality	Polyclonal
Calculated MW	87948

Additional Information

Gene ID	203102
Other Names	ADAM32; Disintegrin and metalloproteinase domain-containing protein 32; ADAM 32
Dilution	WB~~Western Blot: 1/500 - 1/2000. ELISA: 1/40000. Not yet tested in other applications.
Format	Liquid in PBS containing 50% glycerol, 0.5% BSA and 0.09% (W/V) sodium azide.
Storage Conditions	-20°C

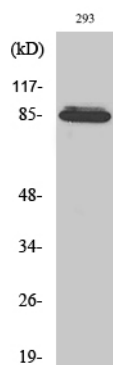
Protein Information

Name	ADAM32
Function	May play a role in sperm development and fertilization This is a non-catalytic metalloprotease-like protein.
Cellular Location	Membrane; Single-pass type I membrane protein
Tissue Location	Testis specific..

Background

May play a role in sperm development and fertilization This is a non-catalytic metalloprotease-like protein.

Images



Western Blot analysis of various cells using ADAM32
Polyclonal Antibody diluted at 1 : 1000

Please note: All products are 'FOR RESEARCH USE ONLY. NOT FOR USE IN DIAGNOSTIC OR THERAPEUTIC PROCEDURES'.