

# ADAMTS-1 Polyclonal Antibody

Catalog # AP68295

## Product Information

---

Application	WB
Primary Accession	<a href="#">Q9UHI8</a>
Reactivity	Human
Host	Rabbit
Clonality	Polyclonal
Calculated MW	105358

## Additional Information

---

Gene ID	9510
Other Names	ADAMTS1; KIAA1346; METH1; A disintegrin and metalloproteinase with thrombospondin motifs 1; ADAM-TS 1; ADAM-TS1; ADAMTS-1; METH-1
Dilution	WB~~Western Blot: 1/500 - 1/2000. ELISA: 1/5000. Not yet tested in other applications.
Format	Liquid in PBS containing 50% glycerol, 0.5% BSA and 0.09% (W/V) sodium azide.
Storage Conditions	-20°C

## Protein Information

---

Name	ADAMTS1
Synonyms	KIAA1346, METH1
Function	Metalloprotease which cleaves aggrecan, a cartilage proteoglycan, at the '1938-Glu- -Leu-1939' site (within the chondroitin sulfate attachment domain), and may be involved in its turnover (By similarity). Also cleaves COMP (PubMed: <a href="#">39672391</a> ). Has angiogenic inhibitor activity (PubMed: <a href="#">10438512</a> ). May play a critical role in follicular rupture (By similarity).
Cellular Location	Secreted, extracellular space, extracellular matrix

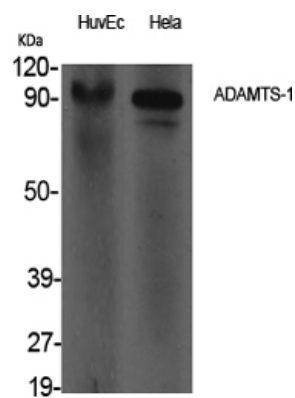
## Background

---

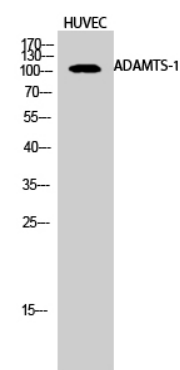
Cleaves aggrecan, a cartilage proteoglycan, at the '1938-Glu-|-Leu-1939' site (within the chondroitin sulfate attachment domain), and may be involved in its turnover (By similarity). Has angiogenic inhibitor activity. Active metalloprotease, which may be associated with various inflammatory processes as well as

development of cancer cachexia. May play a critical role in follicular rupture.

Images



Western Blot analysis of various cells using ADAMTS-1 Polyclonal Antibody



Western Blot analysis of HUVEC cells using ADAMTS-1 Polyclonal Antibody

Please note: All products are 'FOR RESEARCH USE ONLY. NOT FOR USE IN DIAGNOSTIC OR THERAPEUTIC PROCEDURES'.