

ADCK1 Polyclonal Antibody

Catalog # AP68303

Product Information

Application	WB, IHC-P, IF
Primary Accession	Q86TW2
Reactivity	Human, Mouse
Host	Rabbit
Clonality	Polyclonal
Calculated MW	60577

Additional Information

Gene ID	57143
Other Names	ADCK1; Uncharacterized aarF domain-containing protein kinase 1
Dilution	WB~~Western Blot: 1/500 - 1/2000. Immunohistochemistry: 1/100 - 1/300. Immunofluorescence: 1/200 - 1/1000. ELISA: 1/5000. Not yet tested in other applications. IHC-P~~N/A IF~~1:50~200
Format	Liquid in PBS containing 50% glycerol, 0.5% BSA and 0.09% (W/V) sodium azide.
Storage Conditions	-20°C

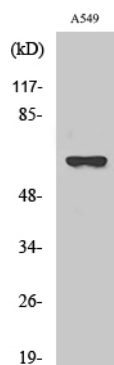
Protein Information

Name	ADCK1 {ECO:0000303 PubMed:31125351}
Function	Appears to be essential for maintaining mitochondrial cristae formation and mitochondrial function by acting via YME1L1 in a kinase- independent manner to regulate essential mitochondrial structural proteins OPA1 and IMMT (PubMed: 31125351). The action of this enzyme is not yet clear (Probable). It is not known if it has protein kinase activity and what type of substrate it would phosphorylate (Ser, Thr or Tyr) (Probable).
Cellular Location	Mitochondrion.

Background

The function of this protein is not yet clear. It is not known if it has protein kinase activity and what type of substrate it would phosphorylate (Ser, Thr or Tyr).

Images



Western Blot analysis of various cells using ADCK1 Polyclonal Antibody

Please note: All products are 'FOR RESEARCH USE ONLY. NOT FOR USE IN DIAGNOSTIC OR THERAPEUTIC PROCEDURES'.