

Adducin β Polyclonal Antibody

Catalog # AP68309

Product Information

| | |
|--------------------------|------------------------|
| Application | WB, IF, ICC, E |
| Primary Accession | P35612 |
| Reactivity | Human, Mouse, Rat |
| Host | Rabbit |
| Clonality | Polyclonal |

Additional Information

| | |
|---------------------------|---|
| Other Names | ADD2; ADDB; Beta-adducin; Erythrocyte adducin subunit beta |
| Dilution | WB--Western Blot: 1/500 - 1/2000. Immunofluorescence: 1/200 - 1/1000. ELISA: 1/5000. Not yet tested in other applications. IF--1:50~200 ICC--N/A E--N/A |
| Format | Liquid in PBS containing 50% glycerol, 0.5% BSA and 0.09% (W/V) sodium azide. |
| Storage Conditions | -20°C |

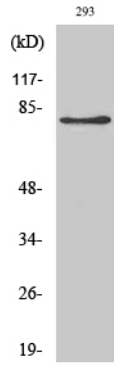
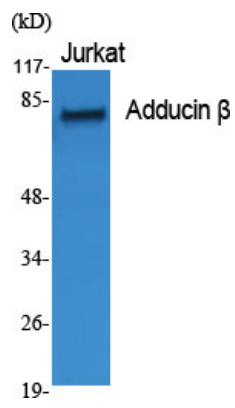
Protein Information

Background

Membrane-cytoskeleton-associated protein that promotes the assembly of the spectrin-actin network. Binds to the erythrocyte membrane receptor SLC2A1/GLUT1 and may therefore provide a link between the spectrin cytoskeleton to the plasma membrane. Binds to calmodulin. Calmodulin binds preferentially to the beta subunit.

Images

Western Blot analysis of various cells using Adducin β Polyclonal Antibody



Western Blot analysis of 293 cells using Adducin β Polyclonal Antibody

Please note: All products are 'FOR RESEARCH USE ONLY. NOT FOR USE IN DIAGNOSTIC OR THERAPEUTIC PROCEDURES'.