

AF-10 Polyclonal Antibody

Catalog # AP68322

Product Information

Application	WB, IHC-P, IF
Primary Accession	P55197
Reactivity	Human, Mouse
Host	Rabbit
Clonality	Polyclonal
Calculated MW	113320

Additional Information

Gene ID	8028
Other Names	MLLT10; AF10; Protein AF-10; ALL1-fused gene from chromosome 10 protein
Dilution	WB~~Western Blot: 1/500 - 1/2000. Immunohistochemistry: 1/100 - 1/300. Immunofluorescence: 1/200 - 1/1000. ELISA: 1/10000. Not yet tested in other applications. IHC-P~~Western Blot: 1/500 - 1/2000. Immunohistochemistry: 1/100 - 1/300. Immunofluorescence: 1/200 - 1/1000. ELISA: 1/10000. Not yet tested in other applications. IF~~1:50~200
Format	Liquid in PBS containing 50% glycerol, 0.5% BSA and 0.09% (W/V) sodium azide.
Storage Conditions	-20°C

Protein Information

Name	MLLT10 (HGNC:16063)
Function	Probably involved in transcriptional regulation. In vitro or as fusion protein with KMT2A/MLL1 has transactivation activity. Binds to cruciform DNA. In cells, binding to unmodified histone H3 regulates DOT1L functions including histone H3 'Lys-79' dimethylation (H3K79me2) and gene activation (PubMed: 26439302).
Cellular Location	Nucleus.
Tissue Location	Expressed abundantly in testis.

Background

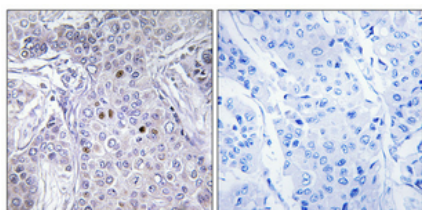
Probably involved in transcriptional regulation. In vitro or as fusion protein with KMT2A/MLL1 has transactivation activity. Binds to cruciform DNA. In cells, binding to unmodified histone H3 regulates DOT1L

functions including histone H3 'Lys-79' dimethylation (H3K79me2) and gene activation (PubMed:[26439302](#)).

Images



Western Blot analysis of various cells using AF-10 Polyclonal Antibody diluted at 1 : 1000



Immunohistochemical analysis of paraffin-embedded Human breast cancer. Antibody was diluted at 1:100(4°,overnight). High-pressure and temperature Tris-EDTA,pH8.0 was used for antigen retrieval. Negative contrl (right) obtained from antibody was pre-absorbed by immunogen peptide.

Please note: All products are 'FOR RESEARCH USE ONLY. NOT FOR USE IN DIAGNOSTIC OR THERAPEUTIC PROCEDURES'.