

# AKAP 149 Polyclonal Antibody

Catalog # AP68346

## Product Information

---

Application	WB, IHC-P, IF
Primary Accession	<a href="#">Q92667</a>
Reactivity	Human
Host	Rabbit
Clonality	Polyclonal
Calculated MW	97342

## Additional Information

---

Gene ID	8165
Other Names	AKAP1; AKAP149; PRKA1; A-kinase anchor protein 1; mitochondrial; A-kinase anchor protein 149 kDa; AKAP 149; Dual specificity A-kinase-anchoring protein 1; D-AKAP-1; Protein kinase A-anchoring protein 1; PRKA1; Spermatid A-kinase anchor prot
Dilution	WB~~Western Blot: 1/500 - 1/2000. Immunohistochemistry: 1/100 - 1/300. Immunofluorescence: 1/200 - 1/1000. ELISA: 1/5000. Not yet tested in other applications. IHC-P~~N/A IF~~1:50~200
Format	Liquid in PBS containing 50% glycerol, 0.5% BSA and 0.09% (W/V) sodium azide.
Storage Conditions	-20°C

## Protein Information

---

Name	AKAP1 ( <a href="#">HGNC:367</a> )
Synonyms	AKAP149, PRKA1
Function	Binds to type I and II regulatory subunits of protein kinase A and anchors them to the cytoplasmic face of the mitochondrial outer membrane (By similarity). Involved in mitochondrial-mediated antiviral innate immunity (PubMed: <a href="#">31522117</a> ). Promotes translocation of NDUF51 into mitochondria to regulate mitochondrial membrane respiratory chain NADH dehydrogenase (Complex I) activity (By similarity).
Cellular Location	Mitochondrion outer membrane {ECO:0000250 UniProtKB:O08715}. Mitochondrion {ECO:0000250 UniProtKB:O08715}
Tissue Location	Isoform 1 is detected in thymus, prostate, testis, ovary, colon and small intestine (PubMed:8769136). Isoform 2 is highly expressed in testis and

detected at much lower levels in kidney, pancreas, liver, lung and brain  
(PubMed:7499250)

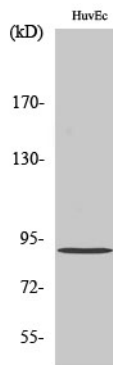
## Background

---

Binds to type I and II regulatory subunits of protein kinase A and anchors them to the cytoplasmic face of the mitochondrial outer membrane.

## Images

---



Western Blot analysis of various cells using AKAP 149  
Polyclonal Antibody diluted at 1 : 2000

Please note: All products are 'FOR RESEARCH USE ONLY. NOT FOR USE IN DIAGNOSTIC OR THERAPEUTIC PROCEDURES'.