

LAMB2 Antibody (C-term)

Purified Rabbit Polyclonal Antibody (Pab)

Catalog # AP6836b

Product Information

Application	IHC-P, FC, WB, E
Primary Accession	P55268
Reactivity	Human
Host	Rabbit
Clonality	Polyclonal
Isotype	Rabbit IgG
Clone Names	RB20568
Calculated MW	195981
Antigen Region	1579-1606

Additional Information

Gene ID	3913
Other Names	Laminin subunit beta-2, Laminin B1s chain, Laminin-11 subunit beta, Laminin-14 subunit beta, Laminin-15 subunit beta, Laminin-3 subunit beta, Laminin-4 subunit beta, Laminin-7 subunit beta, Laminin-9 subunit beta, S-laminin subunit beta, S-LAM beta, LAMB2, LAMS
Target/Specificity	This LAMB2 antibody is generated from rabbits immunized with a KLH conjugated synthetic peptide between 1579-1606 amino acids from the C-terminal region of human LAMB2.
Dilution	IHC-P~~1:100~500 FC~~1:10~50 WB~~1:1000 E~~Use at an assay dependent concentration.
Format	Purified polyclonal antibody supplied in PBS with 0.09% (W/V) sodium azide. This antibody is prepared by Saturated Ammonium Sulfate (SAS) precipitation followed by dialysis against PBS.
Storage	Maintain refrigerated at 2-8°C for up to 2 weeks. For long term storage store at -20°C in small aliquots to prevent freeze-thaw cycles.
Precautions	LAMB2 Antibody (C-term) is for research use only and not for use in diagnostic or therapeutic procedures.

Protein Information

Name	LAMB2
Synonyms	LAMS

Function	Binding to cells via a high affinity receptor, laminin is thought to mediate the attachment, migration and organization of cells into tissues during embryonic development by interacting with other extracellular matrix components.
Cellular Location	Secreted, extracellular space, extracellular matrix, basement membrane. Note=S-laminin is concentrated in the synaptic cleft of the neuromuscular junction

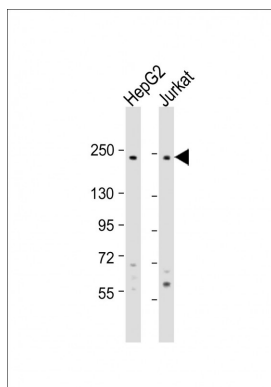
Background

Binding to cells via a high affinity receptor, laminin is thought to mediate the attachment, migration and organization of cells into tissues during embryonic development by interacting with other extracellular matrix components.

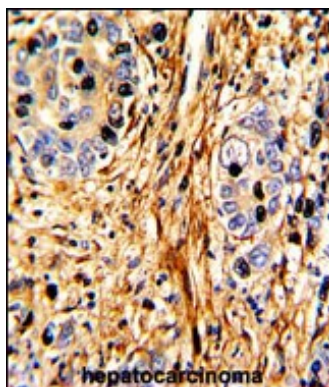
References

So,H.C., et.al., Am. J. Med. Genet. B Neuropsychiatr. Genet. (2009)

Images

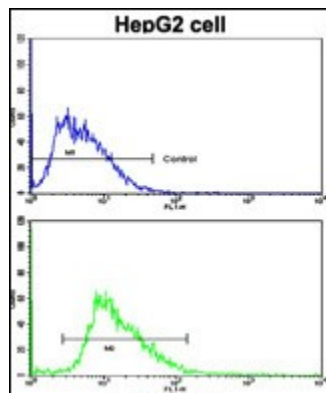


All lanes : Anti-LAMB2 Antibody (C-term) at 1:1000 dilution
Lane 1: HepG2 whole cell lysate
Lane 2: Jurkat whole cell lysate
Lysates/proteins at 20 µg per lane.
Secondary Goat Anti-Rabbit IgG, (H+L), Peroxidase conjugated at 1/10000 dilution. Predicted band size : 196 kDa
Blocking/Dilution buffer: 5% NFDM/TBST.



Formalin-fixed and paraffin-embedded human hepatocarcinoma with LAMB2 Antibody (C-term), which was peroxidase-conjugated to the secondary antibody, followed by DAB staining. This data demonstrates the use of this antibody for immunohistochemistry; clinical relevance has not been evaluated.

Flow cytometric analysis of HepG2 cells using LAMB2 Antibody (C-term)(bottom histogram) compared to a negative control cell (top histogram). FITC-conjugated goat-anti-rabbit secondary antibodies were used for the analysis.



Please note: All products are 'FOR RESEARCH USE ONLY. NOT FOR USE IN DIAGNOSTIC OR THERAPEUTIC PROCEDURES'.