

# Aldolase A Polyclonal Antibody

Catalog # AP68374

## Product Information

---

Application	WB, IF
Primary Accession	<a href="#">P04075</a>
Reactivity	Human, Mouse, Rat
Host	Rabbit
Clonality	Polyclonal
Calculated MW	39420

## Additional Information

---

Gene ID	226
Other Names	ALDOA; ALDA; Fructose-bisphosphate aldolase A; Lung cancer antigen NY-LU-1; Muscle-type aldolase
Dilution	WB~~Western Blot: 1/500 - 1/2000. Immunofluorescence: 1/200 - 1/1000. ELISA: 1/10000. Not yet tested in other applications. IF~~1:50~200
Format	Liquid in PBS containing 50% glycerol, 0.5% BSA and 0.09% (W/V) sodium azide.
Storage Conditions	-20°C

## Protein Information

---

Name	ALDOA ( <a href="#">HGNC:414</a> )
Synonyms	ALDA
Function	Catalyzes the reversible conversion of beta-D-fructose 1,6- bisphosphate (FBP) into two triose phosphate and plays a key role in glycolysis and gluconeogenesis (PubMed: <a href="#">14766013</a> ). In addition, may also function as scaffolding protein (By similarity).
Cellular Location	Cytoplasm, myofibril, sarcomere, I band {ECO:0000250 UniProtKB:P00883}. Cytoplasm, myofibril, sarcomere, M line {ECO:0000250 UniProtKB:P00883}. Note=In skeletal muscle, accumulates around the M line and within the I band, colocalizing with FBP2 on both sides of the Z line in the absence of Ca(2+) {ECO:0000250 UniProtKB:P00883}

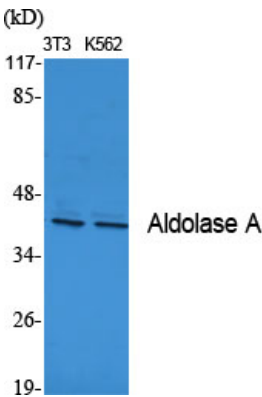
## Background

---

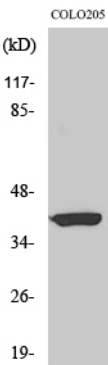
Plays a key role in glycolysis and gluconeogenesis. In addition, may also function as scaffolding protein (By

similarity).

Images



Western Blot analysis of various cells using Aldolase A  
Polyclonal Antibody diluted at 1 : 1000



Western Blot analysis of HT29 cells using Aldolase A  
Polyclonal Antibody diluted at 1 : 1000

Please note: All products are 'FOR RESEARCH USE ONLY. NOT FOR USE IN DIAGNOSTIC OR THERAPEUTIC PROCEDURES'.