

ALS2CR8 Polyclonal Antibody

Catalog # AP68389

Product Information

Application	WB, IHC-P, IF, ICC, E
Primary Accession	Q8N187
Reactivity	Human, Rat, Mouse
Host	Rabbit
Clonality	Polyclonal
Calculated MW	80698

Additional Information

Gene ID	79800
Other Names	ALS2CR8; CARF; Amyotrophic lateral sclerosis 2 chromosomal region candidate gene 8 protein; Calcium-response factor; CaRF; Testis development protein NYD-SP24
Dilution	WB~~Western Blot: 1/500 - 1/2000. Immunohistochemistry: 1/100 - 1/300. ELISA: 1/40000. Not yet tested in other applications. IHC-P~~N/A IF~~1:50~200 ICC~~N/A E~~N/A
Format	Liquid in PBS containing 50% glycerol, 0.5% BSA and 0.09% (W/V) sodium azide.
Storage Conditions	-20°C

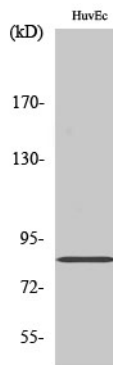
Protein Information

Name	CARF
Synonyms	ALS2CR8
Function	Acts as a transcriptional activator that mediates the calcium- and neuron-selective induction of BDNF exon III transcription. Binds to the consensus calcium-response element CaRE1 5'-CTATTCGAG-3' sequence.
Cellular Location	Nucleus.

Background

Acts as a transcriptional activator that mediates the calcium- and neuron-selective induction of BDNF exon III transcription. Binds to the consensus calcium-response element CaRE1 5'-CTATTCGAG-3' sequence.

Images



Western Blot analysis of various cells using ALS2CR8 Polyclonal Antibody cells nucleus extracted by Minute TM Cytoplasmic and Nuclear Fractionation kit (SC-003, Inventbiotech, MN, USA).

Please note: All products are 'FOR RESEARCH USE ONLY. NOT FOR USE IN DIAGNOSTIC OR THERAPEUTIC PROCEDURES'.