

ALX3 Polyclonal Antibody

Catalog # AP68390

Product Information

Application	WB, IHC-P, IF, ICC, E
Primary Accession	O95076
Reactivity	Human, Mouse, Rat
Host	Rabbit
Clonality	Polyclonal
Calculated MW	36935

Additional Information

Gene ID	257
Other Names	ALX3; Homeobox protein aristaless-like 3; Proline-rich transcription factor ALX3
Dilution	WB~~Western Blot: 1/500 - 1/2000. Immunohistochemistry: 1/100 - 1/300. Immunofluorescence: 1/200 - 1/1000. ELISA: 1/20000. Not yet tested in other applications. IHC-P~~N/A IF~~1:50~200 ICC~~N/A E~~N/A
Format	Liquid in PBS containing 50% glycerol, 0.5% BSA and 0.09% (W/V) sodium azide.
Storage Conditions	-20°C

Protein Information

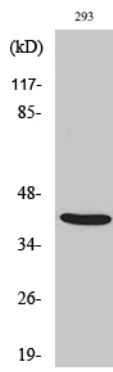
Name	ALX3
Function	Transcriptional regulator with a possible role in patterning of mesoderm during development.
Cellular Location	Nucleus {ECO:0000255 PROSITE-ProRule:PRU00108}.

Background

Transcriptional regulator with a possible role in patterning of mesoderm during development.

Images

Western Blot analysis of various cells using ALX3
Polyclonal Antibody cells nucleus extracted by Minute TM



Cytoplasmic and Nuclear Fractionation kit
(SC-003, Invent biotech, MN, USA).

Please note: All products are 'FOR RESEARCH USE ONLY. NOT FOR USE IN DIAGNOSTIC OR THERAPEUTIC PROCEDURES'.