

# COLEC11 Antibody (N-term)

Purified Rabbit Polyclonal Antibody (Pab)

Catalog # AP6840a

## Product Information

---

<b>Application</b>	WB, IHC-P, FC, E
<b>Primary Accession</b>	<a href="#">Q9BWP8</a>
<b>Reactivity</b>	Human, Rat, Mouse
<b>Host</b>	Rabbit
<b>Clonality</b>	Polyclonal
<b>Isotype</b>	Rabbit IgG
<b>Clone Names</b>	RB19578
<b>Calculated MW</b>	28665
<b>Antigen Region</b>	50-78

## Additional Information

---

<b>Gene ID</b>	78989
<b>Other Names</b>	Collectin-11, Collectin kidney protein 1, CL-K1, COLEC11
<b>Target/Specificity</b>	This COLEC11 antibody is generated from rabbits immunized with a KLH conjugated synthetic peptide between 50-78 amino acids from the N-terminal region of human COLEC11.
<b>Dilution</b>	WB~~1:1000 IHC-P~~1:100~500 FC~~1:10~50 E~~Use at an assay dependent concentration.
<b>Format</b>	Purified polyclonal antibody supplied in PBS with 0.09% (W/V) sodium azide. This antibody is prepared by Saturated Ammonium Sulfate (SAS) precipitation followed by dialysis against PBS.
<b>Storage</b>	Maintain refrigerated at 2-8°C for up to 2 weeks. For long term storage store at -20°C in small aliquots to prevent freeze-thaw cycles.
<b>Precautions</b>	COLEC11 Antibody (N-term) is for research use only and not for use in diagnostic or therapeutic procedures.

## Protein Information

---

<b>Name</b>	COLEC11
<b>Function</b>	Lectin that plays a role in innate immunity, apoptosis and embryogenesis (PubMed: <a href="#">21258343</a> , PubMed: <a href="#">23954398</a> , PubMed: <a href="#">25912189</a> ). Calcium-dependent lectin that binds self and non-self glycoproteins presenting high mannose oligosaccharides with at least one terminal

alpha-1,2-linked mannose epitope (PubMed:[25912189](#)). Primarily recognizes the terminal disaccharide of the glycan (PubMed:[25912189](#)). Also recognizes a subset of fucosylated glycans and lipopolysaccharides (PubMed:[17179669](#), PubMed:[25912189](#)). Plays a role in innate immunity through its ability to bind non-self sugars presented by microorganisms and to activate the complement through the recruitment of MAPS1 (PubMed:[20956340](#), PubMed:[25912189](#)). Also plays a role in apoptosis through its ability to bind in a calcium-independent manner the DNA present at the surface of apoptotic cells and to activate the complement in response to this binding (Probable). Finally, plays a role in development, probably serving as a guidance cue during the migration of neural crest cells and other cell types during embryogenesis (PubMed:[21258343](#), PubMed:[28301481](#)).

**Cellular Location** Secreted.

**Tissue Location** Ubiquitous (PubMed:17179669). Detected in adrenal gland, kidney, liver, ovaries and testis (at protein level) (PubMed:20956340).

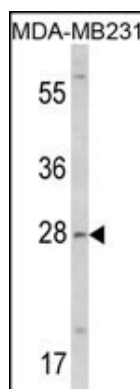
## Background

COLEC11 is a member of the collectin family of C-type lectins, which contain a collagen-like domain and a carbohydrate recognition domain, and play a role in host-defense

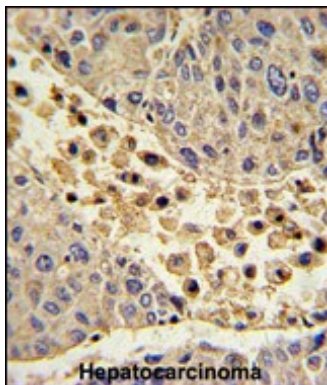
## References

Oguri,M., et.al., Am. J. Hypertens. (2009)

## Images

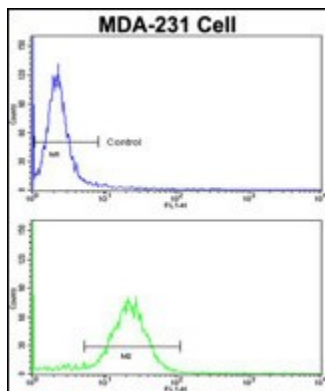


Western blot analysis of COLEC11 Antibody (N-term) (Cat. #AP6840a) in MDA-MB231 cell line lysates (35ug/lane). COLEC11 (arrow) was detected using the purified Pab.

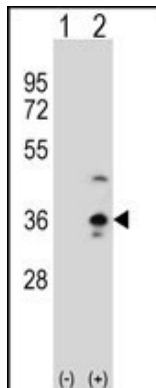


Formalin-fixed and paraffin-embedded human hepatocarcinoma with COLEC11 Antibody (N-term), which was peroxidase-conjugated to the secondary antibody, followed by DAB staining. This data demonstrates the use of this antibody for immunohistochemistry; clinical relevance has not been evaluated.

Flow cytometric analysis of MDA-231 cells using COLEC11 Antibody (N-term)(bottom histogram) compared to a



negative control cell (top histogram). FITC-conjugated goat-anti-rabbit secondary antibodies were used for the analysis.



Western blot analysis of COLEC11 (arrow) using rabbit polyclonal COLEC11 Antibody (N-term) (Cat. #AP6840a). 293 cell lysates (2 ug/lane) either nontransfected (Lane 1) or transiently transfected (Lane 2) with the COLEC11 gene.

Please note: All products are 'FOR RESEARCH USE ONLY. NOT FOR USE IN DIAGNOSTIC OR THERAPEUTIC PROCEDURES'.