

# Annexin VI Polyclonal Antibody

Catalog # AP68421

## Product Information

---

<b>Application</b>	WB, IHC-P, IF
<b>Primary Accession</b>	<a href="#">P08133</a>
<b>Reactivity</b>	Human
<b>Host</b>	Rabbit
<b>Clonality</b>	Polyclonal
<b>Calculated MW</b>	75873

## Additional Information

---

<b>Gene ID</b>	309
<b>Other Names</b>	ANXA6; ANX6; Annexin A6; 67 kDa calelectrin; Annexin VI; Annexin-6; Calphobindin-II; CPB-II; Chromobindin-20; Lipocortin VI; Protein III; p68; p70
<b>Dilution</b>	WB~~Western Blot: 1/500 - 1/2000. Immunohistochemistry: 1/100 - 1/300. Immunofluorescence: 1/200 - 1/1000. ELISA: 1/10000. Not yet tested in other applications. IHC-P~~N/A IF~~1:50~200
<b>Format</b>	Liquid in PBS containing 50% glycerol, 0.5% BSA and 0.09% (W/V) sodium azide.
<b>Storage Conditions</b>	-20°C

## Protein Information

---

<b>Name</b>	ANXA6
<b>Synonyms</b>	ANX6
<b>Function</b>	May associate with CD21. May regulate the release of Ca(2+) from intracellular stores.
<b>Cellular Location</b>	Cytoplasm. Melanosome. Note=Identified by mass spectrometry in melanosome fractions from stage I to stage IV

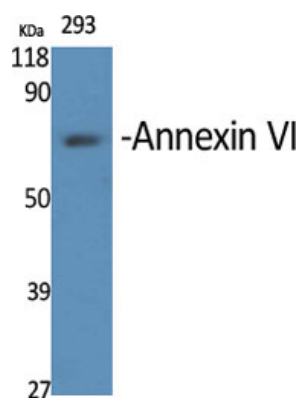
## Background

---

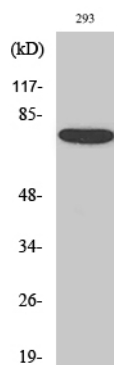
May associate with CD21. May regulate the release of Ca(2+) from intracellular stores.

## Images

---



Western Blot analysis of various cells using Annexin VI Polyclonal Antibody diluted at 1 : 2000



Western Blot analysis of 293 cells using Annexin VI Polyclonal Antibody diluted at 1 : 2000

Please note: All products are 'FOR RESEARCH USE ONLY. NOT FOR USE IN DIAGNOSTIC OR THERAPEUTIC PROCEDURES'.