

# ApoF Polyclonal Antibody

Catalog # AP68459

## Product Information

---

<b>Application</b>	WB, E
<b>Primary Accession</b>	<a href="#">Q13790</a>
<b>Reactivity</b>	Human, Rat, Mouse
<b>Host</b>	Rabbit
<b>Clonality</b>	Polyclonal
<b>Calculated MW</b>	35399

## Additional Information

---

<b>Gene ID</b>	319
<b>Other Names</b>	APOF; Apolipoprotein F; Apo-F; Lipid transfer inhibitor protein; LTIP
<b>Dilution</b>	WB~~Western Blot: 1/500 - 1/2000. ELISA: 1/40000. Not yet tested in other applications. E~~N/A
<b>Format</b>	Liquid in PBS containing 50% glycerol, 0.5% BSA and 0.09% (W/V) sodium azide.
<b>Storage Conditions</b>	-20°C

## Protein Information

---

<b>Name</b>	APOF
<b>Function</b>	Minor apolipoprotein that associates with LDL. Inhibits cholesteryl ester transfer protein (CETP) activity and appears to be an important regulator of cholesterol transport. Also associates to a lesser degree with VLDL, Apo-AI and Apo-AII.
<b>Cellular Location</b>	Secreted
<b>Tissue Location</b>	Expressed by the liver and secreted in plasma.

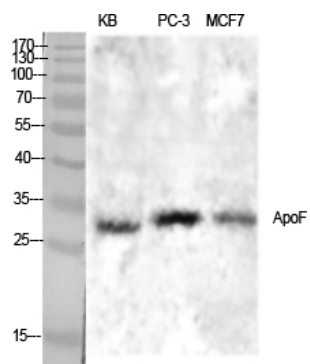
## Background

---

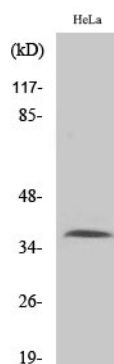
Minor apolipoprotein that associates with LDL. Inhibits cholesteryl ester transfer protein (CETP) activity and appears to be an important regulator of cholesterol transport. Also associates to a lesser degree with VLDL, Apo-AI and Apo-AII.

## Images

---



Western Blot analysis of various cells using ApoF Polyclonal Antibody diluted at 1 : 1000



Western Blot analysis of A549 cells using ApoF Polyclonal Antibody diluted at 1 : 1000

Please note: All products are 'FOR RESEARCH USE ONLY. NOT FOR USE IN DIAGNOSTIC OR THERAPEUTIC PROCEDURES'.