

TCPR1 Antibody (N-term)

Affinity Purified Rabbit Polyclonal Antibody (Pab)

Catalog # AP6845a

Product Information

Application	IHC-P, WB, FC, E
Primary Accession	Q7Z6L1
Reactivity	Human
Host	Rabbit
Clonality	Polyclonal
Isotype	Rabbit IgG
Clone Names	RB18315
Calculated MW	129696
Antigen Region	162-189

Additional Information

Gene ID	25851
Other Names	Tectonin beta-propeller repeat-containing protein 1, TECPR1, KIAA1358
Target/Specificity	This PALA antibody is generated from rabbits immunized with a KLH conjugated synthetic peptide between 162-189 amino acids from the N-terminal region of human TCPR1.
Dilution	IHC-P~~1:100~500 WB~~1:1000 FC~~1:10~50 E~~Use at an assay dependent concentration.
Format	Purified polyclonal antibody supplied in PBS with 0.09% (W/V) sodium azide. This antibody is purified through a protein A column, followed by peptide affinity purification.
Storage	Maintain refrigerated at 2-8°C for up to 2 weeks. For long term storage store at -20°C in small aliquots to prevent freeze-thaw cycles.
Precautions	TCPR1 Antibody (N-term) is for research use only and not for use in diagnostic or therapeutic procedures.

Protein Information

Name	TECPR1
Synonyms	KIAA1358
Function	Tethering factor involved in autophagy. Involved in autophagosome maturation by promoting the autophagosome fusion with lysosomes: acts by

associating with both the ATG5-ATG12 conjugate and phosphatidylinositol-3-phosphate (PtdIns(3)P) present at the surface of autophagosomes. Also involved in selective autophagy against bacterial pathogens, by being required for phagophore/preautophagosomal structure biogenesis and maturation.

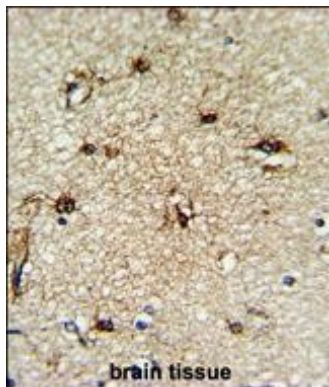
Cellular Location

Cytoplasmic vesicle, autophagosome membrane. Lysosome membrane. Note=Localizes to Lysosome membranes, and binds PtdIns(3)P at the surface of autophagosome. Localizes to autolysosomes, a vesicle formed by the fusion between autophagosomes and lysosomes

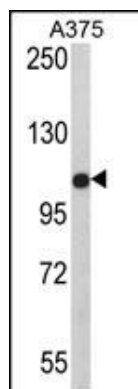
References

Scherer,S.W., et.al., Science 300 (5620), 767-772 (2003)

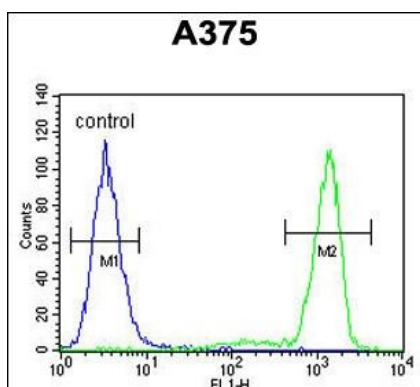
Images



Formalin-fixed and paraffin-embedded human brain tissue reacted with TCPR1 Antibody (N-term), which was peroxidase-conjugated to the secondary antibody, followed by DAB staining. This data demonstrates the use of this antibody for immunohistochemistry; clinical relevance has not been evaluated.



Western blot analysis of TCPR1 Antibody (N-term) (Cat. #AP6845a) in A375 cell line lysates (35ug/lane). PALA (arrow) was detected using the purified Pab.



TCPR1 Antibody (N-term) (Cat. #AP6845a) flow cytometric analysis of A375 cells (right histogram) compared to a negative control cell (left histogram).FITC-conjugated goat-anti-rabbit secondary antibodies were used for the analysis.

Please note: All products are 'FOR RESEARCH USE ONLY. NOT FOR USE IN DIAGNOSTIC OR THERAPEUTIC PROCEDURES'.