

# ApoL1 Polyclonal Antibody

Catalog # AP68460

## Product Information

---

<b>Application</b>	WB, IHC-P, IF, ICC, E
<b>Primary Accession</b>	<a href="#">O14791</a>
<b>Reactivity</b>	Human, Rat, Mouse
<b>Host</b>	Rabbit
<b>Clonality</b>	Polyclonal
<b>Calculated MW</b>	43974

## Additional Information

---

<b>Gene ID</b>	8542
<b>Other Names</b>	APOL1; APOL; Apolipoprotein L1; Apolipoprotein L; Apo-L; ApoL; Apolipoprotein L-I; ApoL-I
<b>Dilution</b>	WB--Western Blot: 1/500 - 1/2000. Immunohistochemistry: 1/100 - 1/300. ELISA: 1/10000. Not yet tested in other applications. IHC-P--Western Blot: 1/500 - 1/2000. Immunohistochemistry: 1/100 - 1/300. ELISA: 1/10000. Not yet tested in other applications. IF--1:50~200 ICC--N/A E--N/A
<b>Format</b>	Liquid in PBS containing 50% glycerol, 0.5% BSA and 0.09% (W/V) sodium azide.
<b>Storage Conditions</b>	-20°C

## Protein Information

---

<b>Name</b>	APOL1 {ECO:0000303 PubMed:19997494}
<b>Synonyms</b>	APOL
<b>Function</b>	May play a role in lipid exchange and transport throughout the body. May participate in reverse cholesterol transport from peripheral cells to the liver. A component of trypanosome lytic factor of human serum; plays a crucial role in killing Trypanosoma brucei by forming pores in parasite lysosomal membranes and sensitizing T.brucei to oxidation-stimulated osmotic lysis (PubMed: <a href="#">12621437</a> , PubMed: <a href="#">16020735</a> , PubMed: <a href="#">19997494</a> , PubMed: <a href="#">26645690</a> , PubMed: <a href="#">7723792</a> ).
<b>Cellular Location</b>	Secreted. Note=Internalized through the endocytic pathway into the lysosomes of Trypanosoma brucei
<b>Tissue Location</b>	Plasma. Found on APOA-I-containing high density lipoprotein (HDL3). Expressed in pancreas, lung, prostate, liver, placenta and spleen

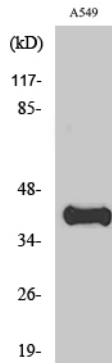
## Background

---

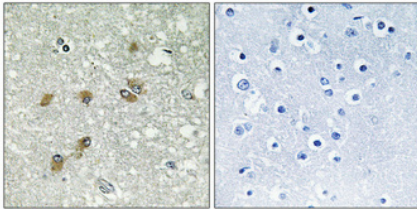
May play a role in lipid exchange and transport throughout the body. May participate in reverse cholesterol transport from peripheral cells to the liver.

## Images

---



Western Blot analysis of various cells using ApoL1 Polyclonal Antibody diluted at 1 : 1000



Immunohistochemical analysis of paraffin-embedded Human brain. Antibody was diluted at 1:100(4°,overnight). High-pressure and temperature Tris-EDTA,pH8.0 was used for antigen retrieval. Negative contrl (right) obtaned from antibody was pre-absorbed by immunogen peptide.

Please note: All products are 'FOR RESEARCH USE ONLY. NOT FOR USE IN DIAGNOSTIC OR THERAPEUTIC PROCEDURES'.