

ARALAR Polyclonal Antibody

Catalog # AP68488

Product Information

Application	WB, IHC-P
Primary Accession	O75746
Reactivity	Human
Host	Rabbit
Clonality	Polyclonal
Calculated MW	74762

Additional Information

Gene ID	8604
Other Names	SLC25A12; ARALAR1; Calcium-binding mitochondrial carrier protein Aralar1; Mitochondrial aspartate glutamate carrier 1; Solute carrier family 25 member 12
Dilution	WB~~Western Blot: 1/500 - 1/2000. Immunohistochemistry: 1/100 - 1/300. ELISA: 1/20000. Not yet tested in other applications. IHC-P~~N/A
Format	Liquid in PBS containing 50% glycerol, 0.5% BSA and 0.09% (W/V) sodium azide.
Storage Conditions	-20°C

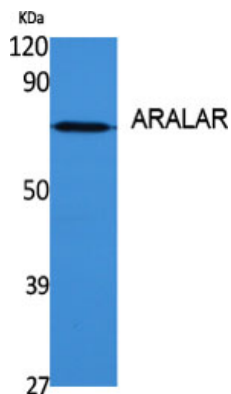
Protein Information

Name	SLC25A12 (HGNC:10982)
Function	Mitochondrial electrogenic aspartate/glutamate antiporter that favors efflux of aspartate and entry of glutamate and proton within the mitochondria as part of the malate-aspartate shuttle (PubMed: 11566871 , PubMed: 19641205 , PubMed: 24515575 , PubMed: 38945283). Also mediates the uptake of L-cysteinesulfinat (3-sulfin-L-alanine) by mitochondria in exchange of L-glutamate and proton (PubMed: 11566871). Can also exchange L-cysteinesulfinat with aspartate in their anionic form without any proton translocation (PubMed: 11566871). Lacks transport activity towards L-glutamine or gamma-aminobutyric acid (GABA) (PubMed: 38945283).
Cellular Location	Mitochondrion inner membrane; Multi-pass membrane protein
Tissue Location	Expressed predominantly in the heart and skeletal muscle, weakly in brain and kidney.

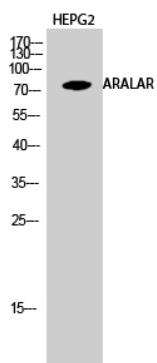
Background

Mitochondrial and calcium-binding carrier that catalyzes the calcium-dependent exchange of cytoplasmic glutamate with mitochondrial aspartate across the mitochondrial inner membrane (PubMed:[11566871](#), PubMed:[25410934](#)). May have a function in the urea cycle (PubMed:[11566871](#)).

Images



Western Blot analysis of various cells using ARALAR Polyclonal Antibody diluted at 1 : 1000



Western Blot analysis of HEPG2 cells using ARALAR Polyclonal Antibody diluted at 1 : 1000

Please note: All products are 'FOR RESEARCH USE ONLY. NOT FOR USE IN DIAGNOSTIC OR THERAPEUTIC PROCEDURES'.