

Arfaptin 1 Polyclonal Antibody

Catalog # AP68493

Product Information

Application	WB, IHC-P, IF
Primary Accession	P53367
Reactivity	Human, Mouse, Rat
Host	Rabbit
Clonality	Polyclonal
Calculated MW	41738

Additional Information

Gene ID	27236
Other Names	ARFIP1; Arfaptin-1; ADP-ribosylation factor-interacting protein 1
Dilution	WB~~Western Blot: 1/500 - 1/2000. Immunohistochemistry: 1/100 - 1/300. Immunofluorescence: 1/200 - 1/1000. ELISA: 1/40000. Not yet tested in other applications. IHC-P~~N/A IF~~1:50~200
Format	Liquid in PBS containing 50% glycerol, 0.5% BSA and 0.09% (W/V) sodium azide.
Storage Conditions	-20°C

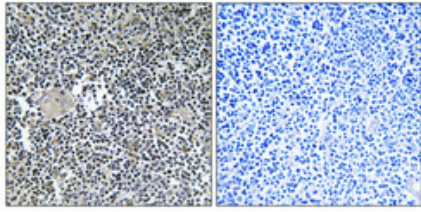
Protein Information

Name	ARFIP1 {ECO:0000303 PubMed:22981988, ECO:0000312 HGNC:HGNC:21496}
Function	Plays a role in controlling biogenesis of secretory granules at the trans-Golgi network (PubMed: 22981988). Mechanistically, binds ARF-GTP at the neck of a growing secretory granule precursor and forms a protective scaffold (PubMed: 22981988 , PubMed: 9038142). Once the granule precursor has been completely loaded, active PRKD1 phosphorylates ARFIP1 and releases it from ARFs (PubMed: 22981988). In turn, ARFs induce fission (PubMed: 22981988). Through this mechanism, ensures proper secretory granule formation at the Golgi of pancreatic beta cells (PubMed: 22981988).
Cellular Location	Golgi apparatus. Golgi apparatus, trans-Golgi network membrane
Tissue Location	Ubiquitously expressed (PubMed: 9038142). Higher levels in liver, pancreas, placenta, skeletal muscle and heart (PubMed: 9038142).

Background

Putative target protein of ADP-ribosylation factor.

Images



Immunohistochemical analysis of paraffin-embedded Human thymus gland. Antibody was diluted at 1:100(4°,overnight). High-pressure and temperature Tris-EDTA,pH8.0 was used for antigen retrieval. Negative contrl (right) obtaned from antibody was pre-absorbed by immunogen peptide.

Please note: All products are 'FOR RESEARCH USE ONLY. NOT FOR USE IN DIAGNOSTIC OR THERAPEUTIC PROCEDURES'.