

# ARHGEF19 Polyclonal Antibody

Catalog # AP68506

## Product Information

---

<b>Application</b>	WB, IHC-P
<b>Primary Accession</b>	<a href="#">Q8IW93</a>
<b>Reactivity</b>	Human
<b>Host</b>	Rabbit
<b>Clonality</b>	Polyclonal
<b>Calculated MW</b>	89197

## Additional Information

---

<b>Gene ID</b>	128272
<b>Other Names</b>	ARHGEF19; Rho guanine nucleotide exchange factor 19; Ephexin-2
<b>Dilution</b>	WB~~Western Blot: 1/500 - 1/2000. Immunohistochemistry: 1/100 - 1/300. ELISA: 1/20000. Not yet tested in other applications. IHC-P~~N/A
<b>Format</b>	Liquid in PBS containing 50% glycerol, 0.5% BSA and 0.09% (W/V) sodium azide.
<b>Storage Conditions</b>	-20°C

## Protein Information

---

<b>Name</b>	ARHGEF19
<b>Function</b>	Acts as a guanine nucleotide exchange factor (GEF) for RhoA GTPase.

## Background

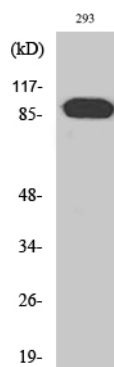
---

Acts as guanine nucleotide exchange factor (GEF) for RhoA GTPase.

## Images

---

Western Blot analysis of various cells using ARHGEF19 Polyclonal Antibody



Please note: All products are 'FOR RESEARCH USE ONLY. NOT FOR USE IN DIAGNOSTIC OR THERAPEUTIC PROCEDURES'.