

# ARX Polyclonal Antibody

Catalog # AP68529

## Product Information

Application	WB
Primary Accession	<a href="#">Q96QS3</a>
Reactivity	Human, Mouse, Rat
Host	Rabbit
Clonality	Polyclonal
Calculated MW	58160

## Additional Information

Gene ID	170302
Other Names	ARX; Homeobox protein ARX; Aristaless-related homeobox
Dilution	WB~~Western Blot: 1/500 - 1/2000. ELISA: 1/5000. Not yet tested in other applications.
Format	Liquid in PBS containing 50% glycerol, 0.5% BSA and 0.09% (W/V) sodium azide.
Storage Conditions	-20°C

## Protein Information

Name	ARX
Function	Transcription factor (PubMed: <a href="#">22194193</a> , PubMed: <a href="#">31691806</a> ). Binds to specific sequence motif 5'-TAATTA-3' in regulatory elements of target genes, such as histone demethylase KDM5C (PubMed: <a href="#">22194193</a> , PubMed: <a href="#">31691806</a> ). Positively modulates transcription of KDM5C (PubMed: <a href="#">31691806</a> ). Activates expression of KDM5C synergistically with histone lysine demethylase PHF8 and perhaps in competition with transcription regulator ZNF711; synergy may be related to enrichment of histone H3K4me3 in regulatory elements (PubMed: <a href="#">31691806</a> ). Required for normal brain development (PubMed: <a href="#">11889467</a> , PubMed: <a href="#">12379852</a> , PubMed: <a href="#">14722918</a> ). Plays a role in neuronal proliferation, interneuronal migration and differentiation in the embryonic forebrain (By similarity). May also be involved in axonal guidance in the floor plate (By similarity).
Cellular Location	Nucleus {ECO:0000255   PROSITE-ProRule:PRU00108, ECO:0000255   PROSITE-ProRule:PRU00138}
Tissue Location	Expressed predominantly in fetal and adult brain and skeletal muscle. Expression is specific to the telencephalon and ventral thalamus. There is an

absence of expression in the cerebellum throughout development and also in adult.

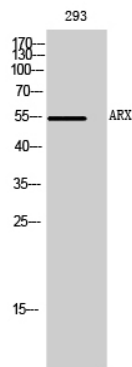
## Background

---

Transcription factor required for normal brain development. May be important for maintenance of specific neuronal subtypes in the cerebral cortex and axonal guidance in the floor plate.

## Images

---



Western Blot analysis of 293 cells using ARX Polyclonal Antibody cells nucleus extracted by Minute TM Cytoplasmic and Nuclear Fractionation kit (SC-003, Inventbiotech, MN, USA).

Please note: All products are 'FOR RESEARCH USE ONLY. NOT FOR USE IN DIAGNOSTIC OR THERAPEUTIC PROCEDURES'.