

Arylsulfatase E Polyclonal Antibody

Catalog # AP68532

Product Information

Application	WB
Primary Accession	P51690
Reactivity	Human
Host	Rabbit
Clonality	Polyclonal
Calculated MW	65669

Additional Information

Gene ID	415
Other Names	ARSE; Arylsulfatase E; ASE
Dilution	WB~~Western Blot: 1/500 - 1/2000. ELISA: 1/10000. Not yet tested in other applications.
Format	Liquid in PBS containing 50% glycerol, 0.5% BSA and 0.09% (W/V) sodium azide.
Storage Conditions	-20°C

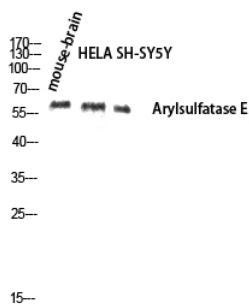
Protein Information

Name	ARSL (HGNC:719)
Synonyms	ARSE
Function	Exhibits arylsulfatase activity towards the artificial substrate 4-methylumbelliferyl sulfate (PubMed: 7720070 , PubMed: 9497243). May be essential for the correct composition of cartilage and bone matrix during development (PubMed: 7720070). Has no activity toward steroid sulfates (PubMed: 7720070).
Cellular Location	Golgi apparatus, Golgi stack
Tissue Location	Expressed in the pancreas, liver and kidney.

Background

May be essential for the correct composition of cartilage and bone matrix during development. Has no activity toward steroid sulfates.

Images



Western blot analysis of mouse-brain HELA SH-SY5Y lysis using Arylsulfatase E antibody. Antibody was diluted at 1:1000

Please note: All products are 'FOR RESEARCH USE ONLY. NOT FOR USE IN DIAGNOSTIC OR THERAPEUTIC PROCEDURES'.