

WSB2 Antibody (C-term)

Purified Rabbit Polyclonal Antibody (Pab)

Catalog # AP6853b

Product Information

Application	WB, E
Primary Accession	Q9NYS7
Other Accession	O54929 , Q0V8J1
Reactivity	Human
Predicted	Bovine
Host	Rabbit
Clonality	Polyclonal
Isotype	Rabbit IgG
Clone Names	RB19968
Calculated MW	45286
Antigen Region	375-404

Additional Information

Gene ID	55884
Other Names	WD repeat and SOCS box-containing protein 2, WSB-2, CS box-containing WD protein, WSB2
Target/Specificity	This WSB2 antibody is generated from rabbits immunized with a KLH conjugated synthetic peptide between 375-404 amino acids from the C-terminal region of human WSB2.
Dilution	WB~~1:1000 E~~Use at an assay dependent concentration.
Format	Purified polyclonal antibody supplied in PBS with 0.09% (W/V) sodium azide. This antibody is purified through a protein A column, followed by peptide affinity purification.
Storage	Maintain refrigerated at 2-8°C for up to 2 weeks. For long term storage store at -20°C in small aliquots to prevent freeze-thaw cycles.
Precautions	WSB2 Antibody (C-term) is for research use only and not for use in diagnostic or therapeutic procedures.

Protein Information

Name	WSB2
Function	May be a substrate-recognition component of a SCF-like ECS (Elongin-Cullin-SOCS-box protein) E3 ubiquitin ligase complex which mediates

the ubiquitination and subsequent proteasomal degradation of target proteins.

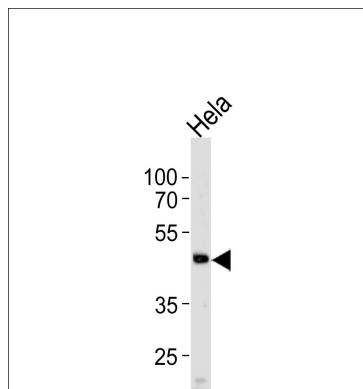
Background

WSB2 is a member of the WD-protein subfamily. This protein contains five WD-repeats spanning most of the protein and an SOCS box in the C-terminus. The SOCS box may act as a bridge between specific substrate-binding domains and E3 ubiquitin protein ligases.

References

Kile,B.T., et.al., Trends Biochem. Sci. 27 (5), 235-241 (2002)

Images



Western blot analysis of lysate from HeLa cell line, using WSB2 Antibody (C-term)(Cat. #AP6853b). AP6853b was diluted at 1:1000 at each lane. A goat anti-rabbit IgG H&L(HRP) at 1:5000 dilution was used as the secondary antibody. Lysate at 35ug per lane.

Please note: All products are 'FOR RESEARCH USE ONLY. NOT FOR USE IN DIAGNOSTIC OR THERAPEUTIC PROCEDURES'.