

ECE-1 Antibody (C-term)

Affinity Purified Rabbit Polyclonal Antibody (Pab)

Catalog # AP6855b

Product Information

Application	WB, IHC-P, FC, E
Primary Accession	P42892
Other Accession	P42893 , Q4PZA2 , P42891
Reactivity	Human
Predicted	Bovine, Mouse, Rat
Host	Rabbit
Clonality	Polyclonal
Isotype	Rabbit IgG
Clone Names	RB17841
Calculated MW	87164
Antigen Region	528-556

Additional Information

Gene ID	1889
Other Names	Endothelin-converting enzyme 1, ECE-1, ECE1
Target/Specificity	This ECE-1 antibody is generated from rabbits immunized with a KLH conjugated synthetic peptide between 528-556 amino acids of human ECE-1.
Dilution	WB~~1:1000 IHC-P~~1:100~500 FC~~1:10~50 E~~Use at an assay dependent concentration.
Format	Purified polyclonal antibody supplied in PBS with 0.09% (W/V) sodium azide. This antibody is purified through a protein A column, followed by peptide affinity purification.
Storage	Maintain refrigerated at 2-8°C for up to 2 weeks. For long term storage store at -20°C in small aliquots to prevent freeze-thaw cycles.
Precautions	ECE-1 Antibody (C-term) is for research use only and not for use in diagnostic or therapeutic procedures.

Protein Information

Name	ECE1
Function	Converts big endothelin-1 to endothelin-1.
Cellular Location	Cell membrane; Single-pass type II membrane protein

Tissue Location

All isoforms are expressed in umbilical vein endothelial cells, polynuclear neutrophils, fibroblasts, atrium cardiomyocytes and ventricles. Isoforms A, B and C are also expressed in placenta, lung, heart, adrenal gland and phaeochromocytoma; isoforms A and C in liver, testis and small intestine; isoform B, C and D in endothelial cells and umbilical vein smooth muscle cells; isoforms C and D in saphenous vein cells, and isoform C in kidney

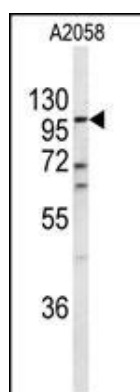
Background

ECE-1 is involved in proteolytic processing of endothelin precursors to biologically active peptides.

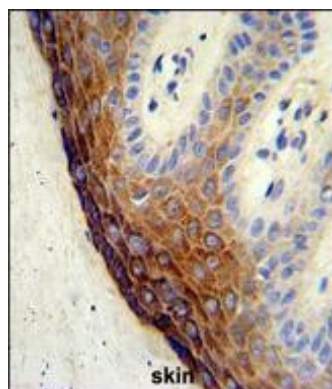
References

Cottrell,G.S., et.al., J. Biol. Chem. 284 (33), 22411-22425 (2009)

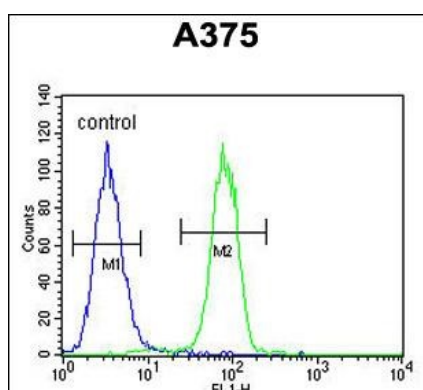
Images



Western blot analysis of ECE-1 Antibody (C-term) (Cat. #AP6855b) in A2058 cell line lysates (35ug/lane). ECE-1 (arrow) was detected using the purified Pab.



Formalin-fixed and paraffin-embedded human skin tissue reacted with ECE-1 Antibody (C-term), which was peroxidase-conjugated to the secondary antibody, followed by DAB staining. This data demonstrates the use of this antibody for immunohistochemistry; clinical relevance has not been evaluated.



ECE-1 Antibody (C-term) (Cat. #AP6855b) flow cytometric analysis of A375 cells (right histogram) compared to a negative control cell (left histogram).FITC-conjugated goat-anti-rabbit secondary antibodies were used for the analysis.

Please note: All products are 'FOR RESEARCH USE ONLY. NOT FOR USE IN DIAGNOSTIC OR THERAPEUTIC PROCEDURES'.