

ECE-1 Antibody (Center)

Purified Rabbit Polyclonal Antibody (Pab)

Catalog # AP6855c

Product Information

Application	WB, E
Primary Accession	P42892
Other Accession	P42893 , Q4PZA2 , P42891
Reactivity	Human, Rat, Mouse
Predicted	Bovine, Rat
Host	Rabbit
Clonality	Polyclonal
Isotype	Rabbit IgG
Clone Names	RB20006
Calculated MW	87164
Antigen Region	392-419

Additional Information

Gene ID	1889
Other Names	Endothelin-converting enzyme 1, ECE-1, ECE1
Target/Specificity	This ECE-1 antibody is generated from rabbits immunized with a KLH conjugated synthetic peptide between 392-419 amino acids from the Central region of human ECE-1.
Dilution	WB~~1:1000 E~~Use at an assay dependent concentration.
Format	Purified polyclonal antibody supplied in PBS with 0.09% (W/V) sodium azide. This antibody is purified through a protein A column, followed by peptide affinity purification.
Storage	Maintain refrigerated at 2-8°C for up to 2 weeks. For long term storage store at -20°C in small aliquots to prevent freeze-thaw cycles.
Precautions	ECE-1 Antibody (Center) is for research use only and not for use in diagnostic or therapeutic procedures.

Protein Information

Name	ECE1
Function	Converts big endothelin-1 to endothelin-1.
Cellular Location	Cell membrane; Single-pass type II membrane protein

Tissue Location

All isoforms are expressed in umbilical vein endothelial cells, polynuclear neutrophils, fibroblasts, atrium cardiomyocytes and ventricles. Isoforms A, B and C are also expressed in placenta, lung, heart, adrenal gland and pheochromocytoma; isoforms A and C in liver, testis and small intestine; isoform B, C and D in endothelial cells and umbilical vein smooth muscle cells; isoforms C and D in saphenous vein cells, and isoform C in kidney

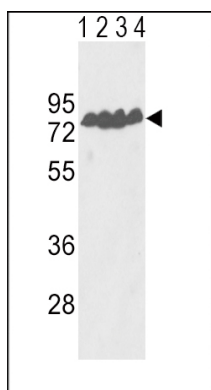
Background

ECE-1 is involved in proteolytic processing of endothelin precursors to biologically active peptides.

References

Cottrell,G.S., et.al., J. Biol. Chem. 284 (33), 22411-22425 (2009)

Images



Western blot analysis of ECE-1 Antibody (Center) (Cat. #AP6855c) in Y79(lane 1), T47D(lane 2) cell line and mouse lung(lane 3), liver(lane 4) tissue lysates (35ug/lane). ECE-1 (arrow) was detected using the purified Pab.

Citations

- [Brain-Wide Insulin Resistance, Tau Phosphorylation Changes, and Hippocampal Neprilysin and Amyloid- \$\beta\$ Alterations in a Monkey Model of Type 1 Diabetes.](#)

Please note: All products are 'FOR RESEARCH USE ONLY. NOT FOR USE IN DIAGNOSTIC OR THERAPEUTIC PROCEDURES'.