

ECE1 Antibody (Center)

Affinity Purified Rabbit Polyclonal Antibody (Pab)

Catalog # AP6855d

Product Information

Application	WB, IHC-P, E
Primary Accession	P42892
Other Accession	P42893 , Q4PZA2 , P42891
Reactivity	Human, Rat, Mouse
Predicted	Bovine, Mouse, Rat
Host	Rabbit
Clonality	Polyclonal
Isotype	Rabbit IgG
Clone Names	RB21628
Calculated MW	87164
Antigen Region	391-420

Additional Information

Gene ID	1889
Other Names	Endothelin-converting enzyme 1, ECE-1, ECE1
Target/Specificity	This ECE1 antibody is generated from rabbits immunized with a KLH conjugated synthetic peptide between 391-420 amino acids from the Central region of human ECE1.
Dilution	WB~~1:1000 IHC-P~~1:100~500 E~~Use at an assay dependent concentration.
Format	Purified polyclonal antibody supplied in PBS with 0.09% (W/V) sodium azide. This antibody is purified through a protein A column, followed by peptide affinity purification.
Storage	Maintain refrigerated at 2-8°C for up to 2 weeks. For long term storage store at -20°C in small aliquots to prevent freeze-thaw cycles.
Precautions	ECE1 Antibody (Center) is for research use only and not for use in diagnostic or therapeutic procedures.

Protein Information

Name	ECE1
Function	Converts big endothelin-1 to endothelin-1.
Cellular Location	Cell membrane; Single-pass type II membrane protein

Tissue Location

All isoforms are expressed in umbilical vein endothelial cells, polynuclear neutrophils, fibroblasts, atrium cardiomyocytes and ventricles. Isoforms A, B and C are also expressed in placenta, lung, heart, adrenal gland and pheochromocytoma; isoforms A and C in liver, testis and small intestine; isoform B, C and D in endothelial cells and umbilical vein smooth muscle cells; isoforms C and D in saphenous vein cells, and isoform C in kidney

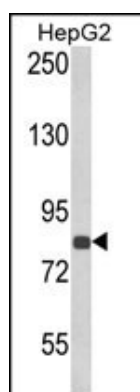
Background

ECE-1 is involved in proteolytic processing of endothelin precursors to biologically active peptides.

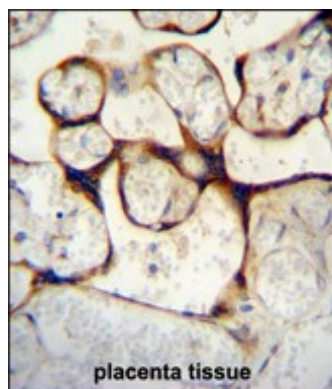
References

Cottrell,G.S., et.al., J. Biol. Chem. 284 (33), 22411-22425 (2009)

Images



Western blot analysis of ECE1 Antibody (Center) (Cat. #AP6855d) in HepG2 cell line lysates (35ug/lane). ECE1 (arrow) was detected using the purified Pab.



ECE1 Antibody (Center) (Cat. #AP6855D)immunohistochemistry analysis in formalin fixed and paraffin embedded human placenta tissue followed by peroxidase conjugation of the secondary antibody and DAB staining.This data demonstrates the use of ECE1 Antibody (Center) for immunohistochemistry. Clinical relevance has not been evaluated.

Please note: All products are 'FOR RESEARCH USE ONLY. NOT FOR USE IN DIAGNOSTIC OR THERAPEUTIC PROCEDURES'.